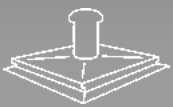




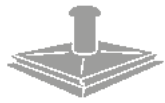
## Manhole Equipment



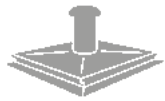
Certainly the right choice!



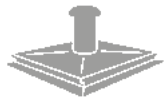
**individual**



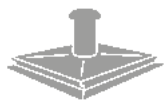
**hygienic**



**reliable**



**robust**



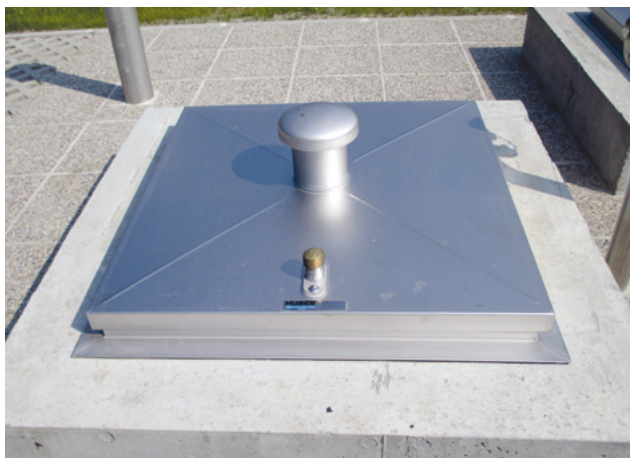
**sustainable**



**easy to operate**

Weatherproof manhole cover SD1, rectangular type .....	4
Weatherproof manhole cover SD1.P, premium model, rectangular type .....	6
Weatherproof manhole cover SD2, round type .....	8
Manhole cover SD3-RC3, attack-proof / security tested, weather-proof, rectangular type .....	10
Manhole cover SD4-RC3, attack-proof / security tested, weather-proof, round type .....	12
Manhole cover SD50, weather-proof, rectangular type .....	14
Watertight manhole cover SD5, rectangular type .....	16
Watertight manhole cover SD6, round type .....	18
Manhole cover SD7, for flush fitting, load bearing, attack-proof / security tested, weather-proof, rectangular type .....	20
Manhole cover SD7.R, for flush fitting, load bearing, attack-proof / security tested, weather-proof, round type .....	22
Manhole cover SD7-RC4, for flush fitting, load bearing, attack-proof / security tested, weather-proof, rectangular type .....	24
Manhole cover SD11, for flush fitting, lightweight design .....	26
Sliding hatch cover SD12 .....	30
Guard grate ASG, load bearing up to 150 kg .....	32
Guard grate ASG.P, load-bearing up to 200 kg .....	34
Catch basin CT for manhole covers .....	36
Safety Access Ladder SiS1 .....	38
Fold-back entrance aid EH K .....	42
Fold-back, extensible entrance aid EH KV .....	43
Insertable entrance aid EH S .....	44
Collapsible hand post with double handle EH VSD .....	45
Collapsible hand post EH VS .....	46
Entrance handle SiS 5 HB .....	47
Safety access ladder with safety guard rail SiS2 .....	48
Safety climbing device with integrated, safety guard rail SiS3 .....	50
Fall arrestor S5c in accordance with DIN EN 353-1 .....	52
Insertable entrance aid EH FSS, insertable pivoted type EH FSSD .....	53
Venting chimney BKA 1 .....	54
Prefabricated manhole FGS 1 .....	56

## ➤➤ Weatherproof manhole cover SD1, rectangular type



*The figure shown here may contain special accessories*

**Manhole cover,** weatherproof, rectangular in shape, completely made of 1.4307 (AISI 304 L) stainless steel.

Based on DIN 1239:2018-4, suitable for use in Ex zone 1.

**The cover** is made of 2 mm stainless steel plate, with a centrally raised profile, inner cross bracing for rigidity, self-retracting lock, stainless steel gas assisted spring damper, integrated arrestor which can only be undone by hand; robust, concealed hinges.

A connection for potential equalisation is provided.

**The frame** consists of a Z-section with a circumferential insect-proof and totally weather-proof rubber seal (frost-proof and weather-resistant), with clips welded to the bottom side, designed for embedding in concrete or for internal bolted fixing.

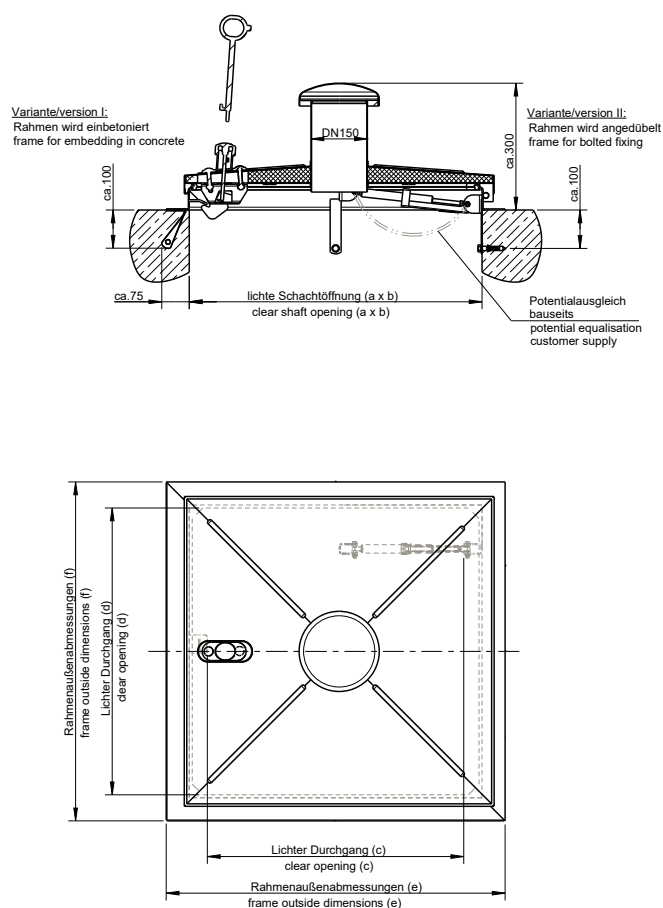
Manhole cover and frame shielded arc-welded, acid-treated in a pickling bath and passivated.

Operating key included.

### Options:

- 1.4404 (AISI 316 L) stainless steel
- Air vent DN 150, centrally welded
- Insulation of the cover, without FCKW
- Fixing material and foam rubber gasket
- Safety lock for increased security, with or without profile cylinder
- Non-standard sizes
- Possibility to open the cover from below
- 4 mm cover plate
- Magnetic contact (cover open/shut indicator)
- Handle
- Pollen filter or biofilter (for odour elimination), or wind ventilator within the air vent
- Separable cover and frame
- Seal glued to the bottom side of the cover
- Lacquer according to RAL colour chart
- Surface made of tear pattern plate
- Fire-service standard lock, for pillar hydrant key DIN 3223, M 12 (supplied without key)
- Safety guard / barrier
- Safety guard / antifall guard
- Multi-part cover





Model	Size a x b	Order no.	Inside pass c x d	Frame outside dimensions e x f
Standard model	600 x 600	166/G (1)	460 x 545	700 x 700
Standard model	800 x 800	188/G	660 x 745	900 x 900
Standard model	1000 x 1000	111/G	900 x 855	1100 x 1100
With air vent DN 150	600 x 600	166/GD (1)	460 x 545	700 x 700
With air vent DN 150	800 x 800	188/GD	660 x 745	900 x 900
With air vent DN 150	1000 x 1000	111/GD	900 x 855	1100 x 1100
With insulation of cover, without FCKW	600 x 600	166/I (1)	460 x 545	700 x 700
With insulation of cover, without FCKW	800 x 800	188/I	660 x 745	900 x 900
With insulation of cover, without FCKW	1000 x 1000	111/I	900 x 855	1100 x 1100
With air vent DN 150 and insulation of cover, without FCKW	600 x 600	166/ID (1)	460 x 545	700 x 700
With air vent DN 150 and insulation of cover, without FCKW	800 x 800	188/ID	660 x 745	900 x 900
With air vent DN 150 and insulation of cover, without FCKW	1000 x 1000	111/ID	900 x 855	1100 x 1100

**Ask for further dimensions.** All measurements in mm.

(1) Note: According to German standards GUW-V C5 „Abwassertechnische Anlagen“ and DVGW Arbeitsblatt W122 „Abschlußbauwerke für Brunnen der Wassergewinnung“, the minimum clear width of entrance openings must be 0.8 m.

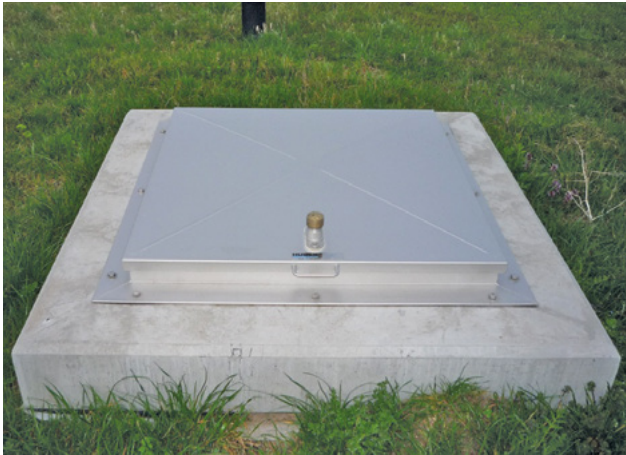
**HUBER SE**

Industriepark Erasbach A1 · D-92334 Berching  
Telefon: +49-8462-201-0 · Fax: +49-8462-201-810  
info@huber.de · Internet: www.huber.de

Subject to technical modification  
Drawing no. 50739444, 5.2022

Weatherproof manhole cover SD1,  
rectangular type

## ➤ Weatherproof manhole cover SD1.P, premium model, rectangular type



*The figure shown here may contain special accessories*

**Manhole cover**, premium model, weatherproof, rectangular in shape, completely made of 1.4307 (AISI 304 L) stainless steel.

Based on DIN 1239:2018-4, suitable for use in Ex zone 1.

**The cover** is made of stainless steel plate, with a centrally raised profile, inner cross bracing for rigidity, self-retracting lock which can be opened with a special key, two stainless steel gas assisted spring dampers (short version, 650N), with integrated self-retracting arrestor which can only be undone by hand, guided by a non-detachable U-profile (the spring damper holder is full penetration welded on three sides), with stable concealed hinges for protection against vandalism, with a circumferential insect-proof rubber seal on the inside (frost-proof and weather-resistant), replaceable, clamped into a groove in the cover.

Insulation of the cover, polyurethane hard foam, CFC-free, with bottom protection plate made of stainless steel. A special method is applied to inject the hard foam in liquid form into the cover to ensure the space is filled completely without any gaps. With handle as help for opening mounted in the middle of the cover. With angles welded on to subsequently receive a customer-supplied magnetic contact (including fixing screws).

A connection for potential equalisation is provided.

**Frame** consisting of 90 mm angle section, flanged on both sides, with four vertically welded on clips provided for bolted fixing inside the shaft as lift lock (one dowelling clip on each side), with three boreholes for bolted fixing on each frame side. With two additional frame fixings in the section of the two gas-assisted spring dampers.

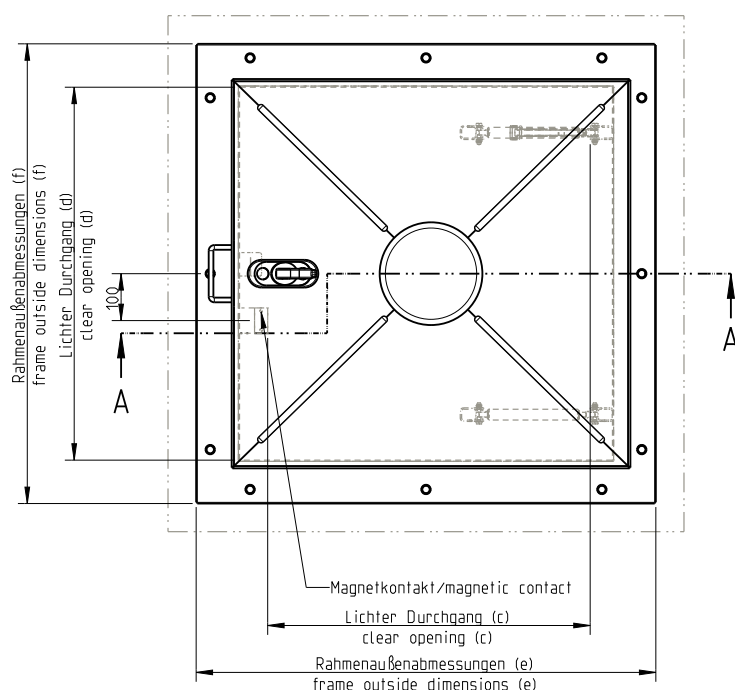
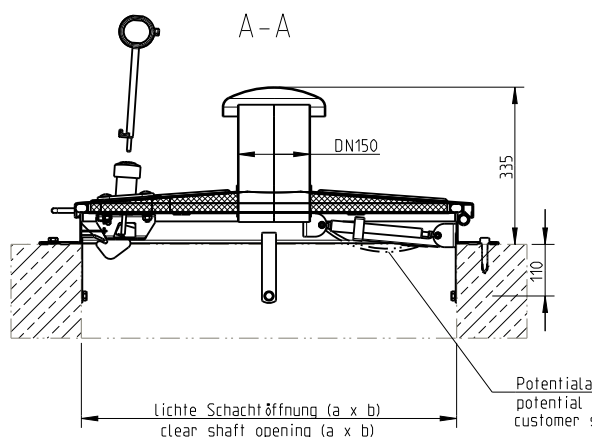
Manhole cover and frame shielded arc-welded, acid-treated in a pickling bath and passivated.

This pickling method ensures that all cavities are reached and optimal corrosion protection is guaranteed.

Fixing material, gasket strip and operating key included.

### Options:

- 1.4404 (AISI 316 L) stainless steel
- Air vent DN 150
- Safety lock for increased security, with or without profile cylinder
- Non-standard sizes
- Possibility to open the cover from below
- Pollen filter or biofilter (for odour elimination), or wind ventilator within the air vent
- Lacquer according to RAL colour chart
- Safety guard / barrier
- Safety guard / antifall guard



Model	Size $\varnothing$ a	Order no.	Inside pass c x d	Frame outside dimensions e x f
With insulation of cover, without FCKW	800 x 800	188/I-P	686 x 795	980 x 980
With air vent DN 150 and insulation of cover, without FCKW	800 x 800	188/ID-P	686 x 795	980 x 980
With insulation of cover, without FCKW	1000 x 1000	111/I-P	886 x 995	1180 x 1180
With air vent DN 150 and insulation of cover, without FCKW	1000 x 1000	111/ID-P	886 x 995	1180 x 1180

Ask for further dimensions.

## HUBER SE

Industriepark Erasbach A1 · D-92334 Berching  
Telefon: +49-84 62-201-0 · Fax: +49-84 62-201-810  
info@huber.de · Internet: www.huber.de

Subject to technical modification  
Drawing no. 50716664, 5.2022

Weatherproof manhole cover SD1.P,  
premium model, rectangular type

## ➤➤ Weatherproof manhole cover SD2, round type



*The figure shown here may contain special accessories*

**Manhole cover,** weatherproof, round in shape, completely made of 1.4307 (AISI 304 L) stainless steel.

Based on DIN 1239:2018-4, suitable for use in Ex zone 1.

**The cover** is made of 2 mm stainless steel plate, with a centrally raised profile, inner cross bracing for rigidity, self-retracting lock, stainless steel gas assisted spring damper, integrated arrestor which can only be undone by hand; robust, concealed hinges.

A connection for potential equalisation is provided.

**The frame** consists of an angle section with a circumferential insect-proof and totally weather-proof rubber seal (frost-proof and weather-resistant), with clips welded to the bottom side, designed for embedding in concrete, or for dowelling.

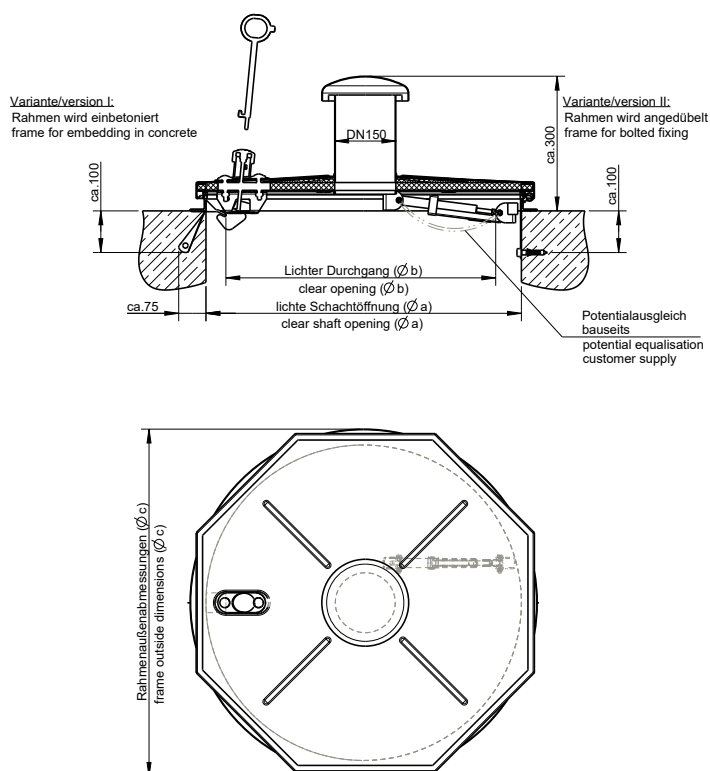
Manhole cover and frame shielded arc-welded, acid-treated in a pickling bath and passivated.

Operating key included.

### Options:

- 1.4404 (AISI 316 L) stainless steel
- Air vent DN 150, centrally welded
- Insulation of the cover, without FCKW
- Fixing material and foam rubber gasket
- Safety lock for increased security, with or without profile cylinder
- Non-standard sizes
- Possibility to open the cover from below
- 4 mm cover plate
- Magnetic contact (cover open/shut indicator)
- Handle
- Pollen filter or biofilter (for odour elimination) or wind ventilator within the air vent
- Separable cover and frame
- Seal glued to the bottom side of the cover
- Lacquer according to RAL colour chart
- Surface made of tear pattern plate
- Fire-service standard lock, for pillar hydrant key DIN 3223, M 12 (supplied without key)
- Safety guard / antifall guard
- Multi-part cover





Model	Size ø a	Order no.	Inside pass ø b	Frame outside dimensions ø c
Standard model	600	106/GR (1)	495	675
Standard model	800	108/GR	695	875
Standard model	1000	101/GR	895	1075
With air vent DN 150	600	106/GDR (1)	495	675
With air vent DN 150	800	108/GDR	695	875
With air vent DN 150	1000	101/GDR	895	1075
With insulation of cover, without FCKW	600	106/IR (1)	495	675
With insulation of cover, without FCKW	800	108/IR	695	875
With insulation of cover, without FCKW	1000	101/IR	895	1075
With air vent DN 150 and insulation of cover, without FCKW	600	106/IDR (1)	495	675
With air vent DN 150 and insulation of cover, without FCKW	800	108/IDR	695	875
With air vent DN 150 and insulation of cover, without FCKW	1000	101/IDR	895	1075

**Ask for further dimensions.** All measurements in mm.

(1) Note: According to German standards GUW-V C5 „Abwassertechnische Anlagen“ and DVGW Arbeitsblatt W122 „Abschlußbauwerke für Brunnen der Wassergewinnung“, the minimum clear width of entrance openings must be 0.8 m.

**HUBER SE**

Industriepark Erasbach A1 · D-92334 Berching  
Telefon: +49-8462-201-0 · Fax: +49-8462-201-810  
info@huber.de · Internet: www.huber.de

Subject to technical modification  
Drawing no. 50739517, 5.2022

Weatherproof manhole cover SD2, round type

## ➤➤ Manhole cover SD3-RC3, attack-proof / security tested, weather-proof, rectangular type



*The figure shown here may contain special accessories*

**Manhole cover,** secure to prevent forced access, weatherproof, rectangular in shape, made of 1.4307 (AISI 304 L) stainless steel.

Based on DIN 1239:2018-4, security tested to resistance class RC3 (DIN EN 1627). According to requirements of DVGW W 1050 - Object protection for water supply structures. Suitable for use in Ex zone 1.

**The cover** consisting of a 4 mm thick stainless steel plate with a centrally raised profile, with stable concealed hinges, stainless steel gas assisted spring dampers, integrated arrestor which can only be undone by hand, with handle, with a replaceable circumferential, insect-proof and totally weather-proof rubber seal (frost-proof and weather-resistant) attached to the underside of the cover for low wear, including lock system with anti-drilling protection, as standard with hardened safety lock as recommended by criminal investigation departments and in accordance with the normative standards; the profile cylinder in accordance with DIN 18252 to be provided by the customer.

A connection for potential equalisation is provided.

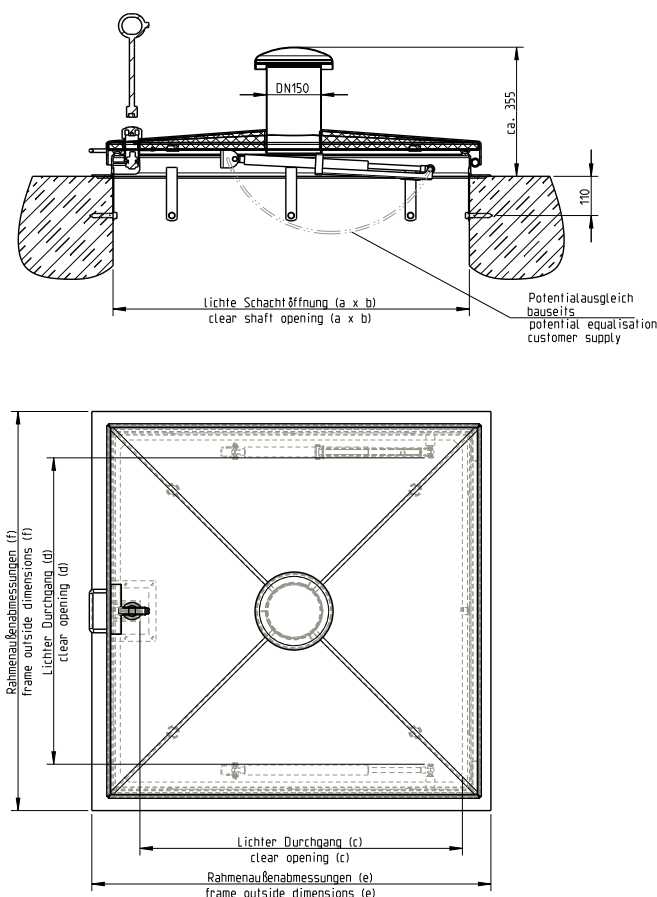
**The frame** is made of bent stainless steel profile, designed for bolted fixing with clips inside the manhole as lift locks.

Manhole cover and frame shielded arc-welded, acid-treated in a pickling bath and passivated.

Operating key included.

### Options:

- 1.4404 (AISI 316 L) stainless steel
- Air vent DN 150, centrally welded
- Insulation of the cover, without FCKW
- Fixing material and foam rubber gasket
- Non-standard sizes
- Magnetic contact (cover open/shut indicator)
- Lacquer according to RAL colour chart
- Pollen filter or biofilter (for odour elimination) within the air vent
- Safety guard / barrier
- Safety guard / antifall guard



Model	Size a x b	Order no.	Inside pass c x d	Frame outside dimensions e x f
Standard model	600 x 600 (1)	166/GS-RC3	460 x 545	700 x 700
Standard model	800 x 800	188/GS-RC3	660 x 745	900 x 900
Standard model	1000 x 1000	111/GS-RC3	900 x 855	1100 x 1100
With air vent DN 150	600 x 600 (1)	166/GDS-RC3	460 x 545	700 x 700
With air vent DN 150	800 x 800	188/GDS-RC3	660 x 745	900 x 900
With air vent DN 150	1000 x 1000	111/GDS-RC3	900 x 855	1100 x 1100
With insulation of cover, without FCKW	600 x 600 (1)	166/IS-RC3	460 x 545	700 x 700
With insulation of cover, without FCKW	800 x 800	188/IS-RC3	660 x 745	900 x 900
With insulation of cover, without FCKW	1000 x 1000	111/IS-RC3	900 x 855	1100 x 1100
With air vent DN 150 and insulation of cover, without FCKW	600 x 600 (1)	166/IDS-RC3	460 x 545	700 x 700
With air vent DN 150 and insulation of cover, without FCKW	800 x 800	188/IDS-RC3	660 x 745	900 x 900
With air vent DN 150 and insulation of cover, without FCKW	1000 x 1000	111/IDS-RC3	900 x 855	1100 x 1100

**Ask for further dimensions.** All measurements in mm.

(1) Note: According to German standards GUW-V C5 „Abwassertechnische Anlagen“ and DVGW Arbeitsblatt W122 „Abschlußbauwerke für Brunnen der Wassergewinnung“, the minimum clear width of entrance openings must be 0.8 m.

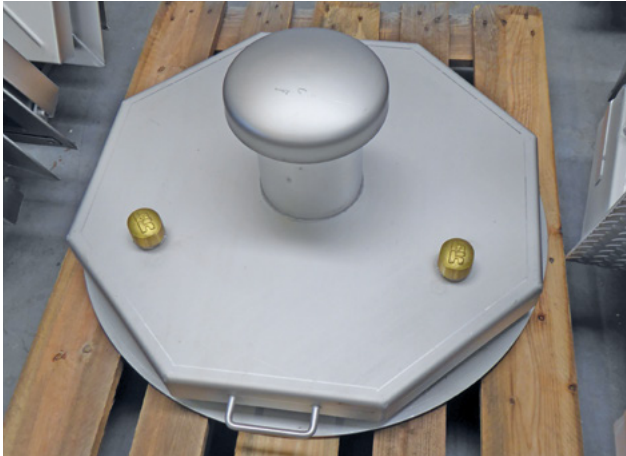
## HUBER SE

Industriepark Erasbach A1 · D-92334 Berching  
Telefon: +49-8462-201-0 · Fax: +49-8462-201-810  
info@huber.de · Internet: www.huber.de

Subject to technical modification  
Drawing no. 51116380, 12.2022

Manhole cover SD3-RC3, attack-proof/security tested,  
weather-proof, rectangular type

## ➤➤ Manhole cover SD4-RC3, attack-proof / security tested, weather-proof, round type



*The figure shown here may contain special accessories*

**Manhole cover,** secure to prevent forced access, weatherproof, round in shape, made of 1.4307 (AISI 304 L) stainless steel.

Based on DIN 1239:2018-4, security tested to resistance class RC3 (DIN EN 1627). According to requirements of DVGW W 1050 - Object protection for water supply structures. Suitable for use in Ex zone 1.

**The cover** consisting of a 4 mm thick stainless steel plate with a centrally raised profile, with stable concealed hinges, stainless steel gas assisted spring dampers, integrated arrestor which can only be undone by hand, with handle, with a replaceable circumferential, insect-proof and totally weather-proof rubber seal (frost-proof and weather-resistant) attached to the underside of the cover for low wear, including lock system with anti-drilling protection, as standard with hardened safety lock as recommended by criminal investigation departments and in accordance with the normative standards; the profile cylinder in accordance with DIN 18252 to be provided by the customer.

A connection for potential equalisation is provided.

**The frame** consists of an angle section, designed for bolted fixing with clips inside the manhole as lift locks.

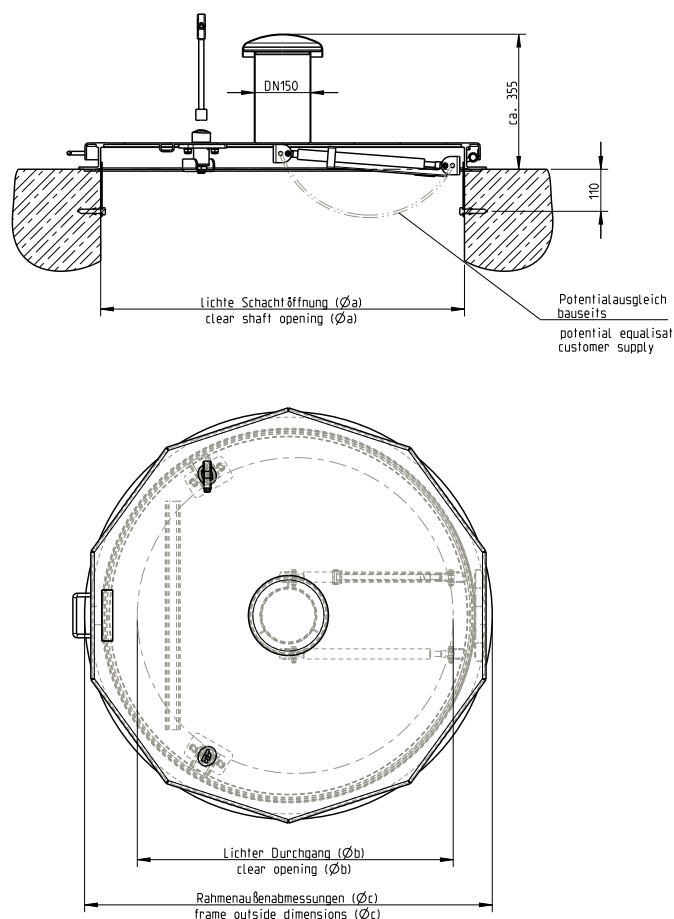
Manhole cover and frame shielded arc-welded, acid-treated in a pickling bath and passivated.

Operating key included.

### Options:

- 1.4404 (AISI 316 L) stainless steel
- Air vent DN 150, centrally welded
- Insulation of the cover, without FCKW
- Fixing material and foam rubber gasket 30/5
- Non-standard sizes
- Magnetic contact (cover open/shut indicator)
- Lacquer according to RAL colour chart
- Pollen filter or biofilter (for odour elimination) within the air vent
- Safety guard / antifall guard





Model	Size ø a	Order no.	Inside pass ø b	Frame outside dimensions ø c
Standard model	600	166/GRS-RC3 (1)	445	723
Standard model	800	108/GRS-RC3	645	915
Standard model	1000	101/GRS-RC3	845	1115
With air vent DN 150	600	106/GDRS-RC3 (1)	445	723
With air vent DN 150	800	108/GDRS-RC3	645	915
With air vent DN 150	1000	101/GDRS-RC3	845	1115
With insulation of cover, without FCKW	600	106/IRS-RC3 (1)	445	723
With insulation of cover, without FCKW	800	108/IRS-RC3	645	915
With insulation of cover, without FCKW	1000	101/IRS-RC3	845	1115
With air vent DN 150 and insulation of cover, without FCKW	600	106/IDRS-RC3 (1)	445	723
With air vent DN 150 and insulation of cover, without FCKW	800	108/IDRS-RC3	645	915
With air vent DN 150 and insulation of cover, without FCKW	1000	101/IDRS-RC3	845	1115

**Ask for further dimensions.** All measurements in mm.

(1) Note: According to German standards GUV-V C5 „Abwassertechnische Anlagen“ and DVGW Arbeitsblatt W122 „Abschlußbauwerke für Brunnen der Wassergewinnung“, the minimum clear width of entrance openings must be 0.8 m.

## HUBER SE

Industriepark Erasbach A1 · D-92334 Berching  
Telefon: +49-8462-201-0 · Fax: +49-8462-201-810  
info@huber.de · Internet: www.huber.de

Subject to technical modification  
Drawing no. 51617212, 12.2022

Manhole cover SD4-RC3, attack-proof/security tested,  
weather-proof, round type

## ➤➤ Manhole cover SD50, weather-proof, rectangular type



**Manhole cover**, weatherproof, rectangular in shape, completely made of 1.4307 (AISI 304 L) stainless steel, in accordance with DIN 1239, suitable for use in Ex zone 1.

**The cover** consists of a stainless steel checkered plate, with flush-mounted screw closure, as standard with hardened safety lock (the profile cylinder to be provided by the customer), with handle, stainless steel gas-assisted spring dampers with integrated arrester which can only be undone by hand; robust, concealed hinges. Replaceable, insect-proof rubber seal attached to the underside of the cover for low wear. Load-bearing up to 5 kN. A connection for potential equalisation is provided.

**The frame** consists of a Z-profile, with a height of 150 mm; ventilation openings are incorporated in the frame, covered at the back with insect-proof stainless steel mesh. Frame support width 80 mm, prepared for bolted fixing through the frame, with additional lift-off protection inside the shaft.

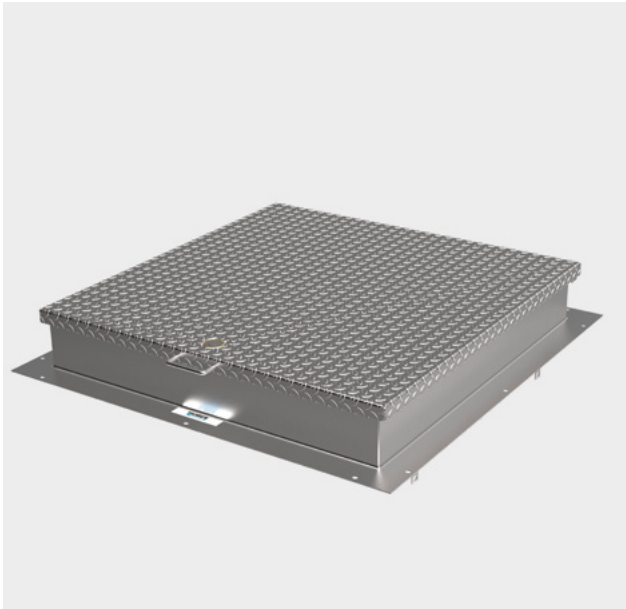
**The guard grate** is made of angle profile, load-bearing up to 200 kg, integrated in the frame, flush with lower edge of frame (up to 1000 mm projection), with hinges and gas pressure springs for easy opening and closing; the guard grate and cover folding in the same direction.

Manhole cover, antifall guard and frame shielded arc-welded, acid-treated in a pickling bath and passivated.

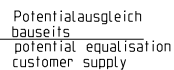
Operating key included.

### Options:

- 1.4404 (AISI 316 L) stainless steel
- Without ventilation openings
- Insulation of the cover, CFC-free
- Fixing material and foam rubber gasket
- Non-standard sizes
- Cover plate 4 mm smooth sheet metal
- Magnetic contact (cover open/shut indicator)
- Lacquer according to RAL colour chart
- Multi-part cover



*The figure shown here may contain special accessories*



**Ask for further dimensions.** All measurements in mm.

Manhole cover SD50, weather-proof, rectangular type

## ➤➤ Watertight manhole cover SD5, rectangular type



*The figure shown here may contain special accessories*

**Manhole cover,** watertight up to 1 m head of water, rectangular in shape, completely made of 1.4307 (AISI 304 L) stainless steel.

Based on DIN 1239:2018-4, suitable for use in Ex zone 1.

**The cover** is made of stainless steel plate, with a centrally raised profile, robust external hinges, stainless steel gas assisted spring damper, integrated arrestor which can only be undone by hand, handle, circumferential rubber seal (frost-proof and weather resistant) fixed in a slot, central lock and protective hood of brass, which can only be opened with a special key.

A connection for potential equalisation is provided.

**The frame** consists of an angle section for bolted fixing, with two internal lift locks.

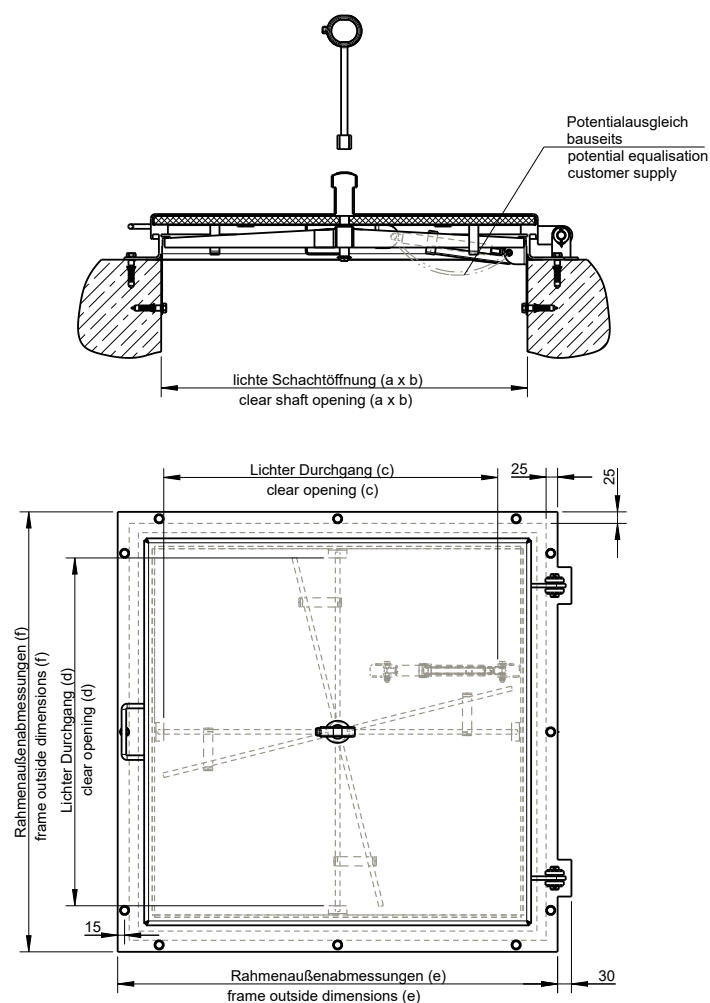
Manhole cover and frame shielded arc-welded, acid-treated in a pickling bath and passivated.

Fixing material, gasket strip and operating key included.

### Options:

- 1.4404 (AISI 316 L) stainless steel
- Insulation of the cover, without FCKW
- Safety lock for increased security, with or without profile cylinder
- Non-standard sizes
- Magnetic contact
- Flood-proof up to 5 m head of water, with multiple screw connection (clear opening dimensions to be taken into account)
- Application in plants in contact with ozone, 1.4404 stainless steel, with viton seal, without gas pressure spring, up to 1 m head of water
- Back-up proof up to 0.5 bar, with multiple screw connection (clear opening dimensions to be taken into account)
- Unscrewable air vent with X-piece to seal the vapour hood opening in case of danger of flood water
- Safety guard / barrier
- Safety guard / antifall guard





Model	Size a x b	Order no.	Inside pass c x d	Frame outside dimensions e x f
Standard model, square	600 x 600	166/Ü (1)	525 x 555	785 x 755
Standard model, square	800 x 800	188/Ü	725 x 755	985 x 955
Standard model, square	1000 x 1000	111/Ü	925 x 955	1185 x 1155
Standard model, square with insulation (2)	600 x 600	166/Ü (1)	525 x 555	785 x 755
Standard model, square with insulation (2)	800 x 800	188/Ü	725 x 755	985 x 955
Standard model, square with insulation (2)	1000 x 1000	111/Ü	925 x 955	1185 x 1155

**Ask for further dimensions.** All measurements in mm.

(1) Note: According to German standards GUV-V C5 „Abwassertechnische Anlagen“ and DVGW Arbeitsblatt W122 „Abschlußbauwerke für Brunnen der Wassergewinnung“, the minimum clear width of entrance openings must be 0.8 m.

(2) with additional insulation of Polyurethan hard foam without FCKW, protected with stainless steel plate on the bottom side.

**HUBER SE**

Industriepark Erasbach A1 · D-92334 Berching  
Telefon: +49-84 62-201-0 · Fax: +49-84 62-201-810  
info@huber.de · Internet: www.huber.de

Subject to technical modification  
Drawing no. 50740237, 12.2023

Watertight manhole cover SD5,  
rectangular type

## ➤➤ Watertight manhole cover SD6, round type



*The figure shown here may contain special accessories*

**Manhole cover**, watertight up to 1 m head of water, round in shape, completely made of 1.4307 (AISI 304 L) stainless steel.

Based on DIN 1239:2018-4, suitable for use in Ex zone 1.

**The cover** is made of stainless steel plate, with a centrally raised profile, robust external hinges, stainless steel gas assisted spring damper, integrated arrestor which can only be undone by hand, handle, circumferential rubber seal (frost-proof and weatherresistant) fixed in a slot, central lock and protective hood of brass, which can only be opened with a special key.

A connection for potential equalisation is provided.

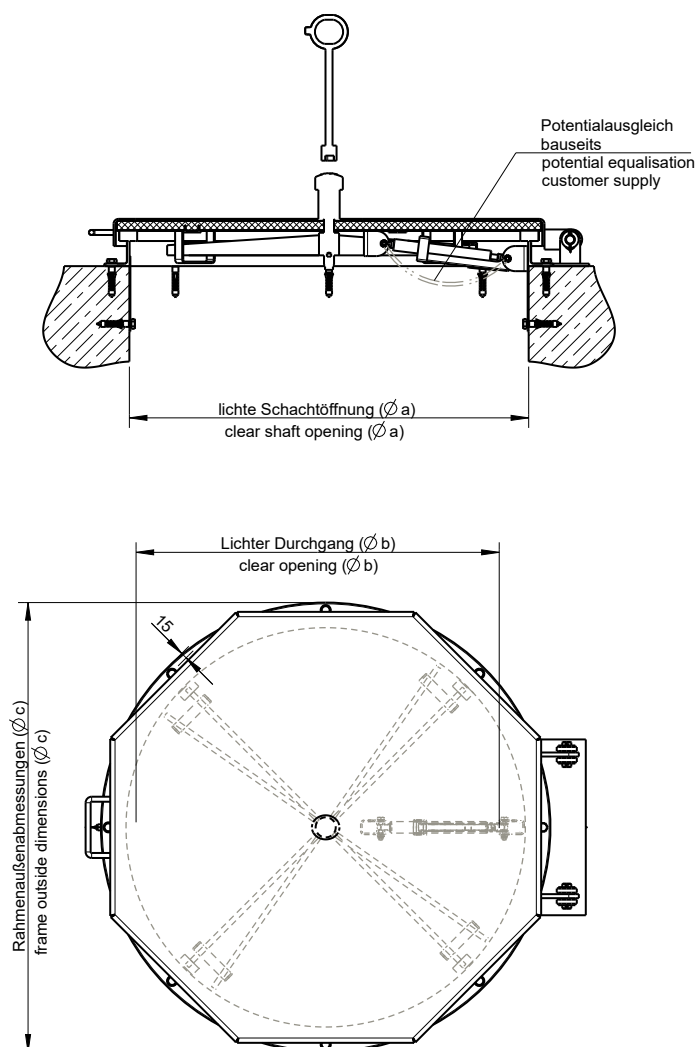
**The frame** consists of an angle section 50/50 mm for bolted fixing, with two internal lift locks.

Manhole cover and frame shielded arc-welded, acidtreated in a pickling bath and passivated.

Fixing material, gasket strip and operating key included.

### Options:

- 1.4404 (AISI 316 L) stainless steel
- Insulation of the cover, without FCKW
- Safety lock for increased security, with or without profile cylinder
- Non-standard sizes
- Magnetic contact
- Flood-proof up to 5 m head of water, with multiple screw connection (clear opening dimensions to be taken into account)
- Application in plants in contact with ozone, 1.4404 stainless steel, with viton seal, without gas pressure spring, up to 1 m head of water
- Back-up proof up to 0.5 bar, with multiple screw connection (clear opening dimensions to be taken into account)
- Unscrewable air vent with X-piece to seal the vapour hood opening in case of danger of flood water
- Safety guard / antiffall guard



Model	Size $\varnothing a$	Order no.	Inside pass $\varnothing b$	Frame outside dimensions $\varnothing c$
Standard model, square	600	166/RÜ (1)	525	695
Standard model, square	800	188/RÜ	725	895
Standard model, square	1000	111/RÜ	925	1095
Standard model, square with insulation (2)	600	166/IRÜ (1)	525	695
Standard model, square with insulation (2)	800	188/IRÜ	725	895
Standard model, square with insulation (2)	1000	111/IRÜ	925	1095

**Ask for further dimensions.** All measurements in mm.

(1) Note: According to German standards GUV-V C5 „Abwassertechnische Anlagen“ and DVGW Arbeitsblatt W122 „Abschlußbauwerke für Brunnen der Wassergewinnung“, the minimum clear width of entrance openings must be 0.8 m.

(2) with additional insulation of Polyurethan hard foam without FCKW, protected with stainless steel plate on the bottom side.

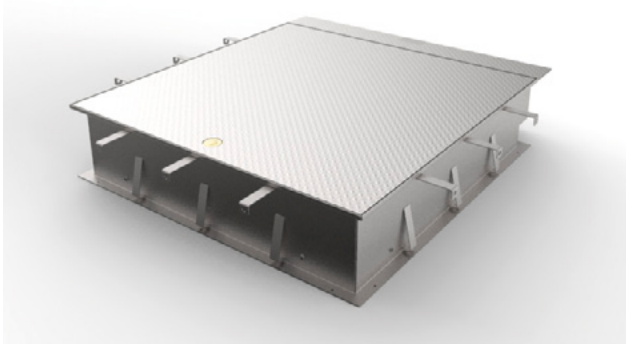
**HUBER SE**

Industriepark Erasbach A1 · D-92334 Berching  
Telefon: +49-84 62-201-0 · Fax: +49-84 62-201-810  
info@huber.de · Internet: www.huber.de

Subject to technical modification  
Drawing no. 50740457, 12.2023

Watertight manhole cover SD6, round type

## ➤➤ Manhole cover SD7, for flush fitting, load bearing, attack-proof / security tested, weather-proof, rectangular type



*The figure shown here may contain special accessories*

**Manhole cover,** installed flush with the surface for pedestrian and/or vehicle traffic, optionally in class A15, B125, D400, E600, weatherproof, odour-tight against pressureless water, attack-proof, rectangular in shape, made of 1.4307 (AISI 304 L) stainless steel.

Secure to prevent forced access, certified to resistance class RC3 according to DIN EN 1627 in class D400, meeting the requirements of DVGW W 1050 - Object protection for water supply structures. Suitable for use in Ex zone 1.

Not suitable for big-volume traffic.

**Designed for a clear width up to and including 1000 mm and certified to:**

- DIN 1229 / DIN EN 124-1:2015-09 and DIN EN 124-3:2015-09, classes A15, B125, D400, E600 with test certificate and external monitoring.

**Designed for a clear width bigger than 1000 mm and statically calculated according to:**

- DIN EN 1991:2010-12 (Eurocode 1) and DIN EN 1993:2010-12 (Eurocode 3), class EC10 (comparable with class A) and EC100 (comparable with class D).

The cover consists of a stainless steel tear pattern plate, with additional bracing on the bottom according to the weight (load class), slip resistance in accordance with DIN EN 124-1:2015-09, with a low-wear seal on the cover bottom side, screw lock, including lock system with antidrilling protection, as standard with hardened

safety lock as recommended by criminal investigation departments and in accordance with the normative standards; the profile cylinder in accordance with DIN 18252 to be provided by the customer. Frost-proof inner hinges, help for opening in the form of stainless steel gas assisted spring dampers with integrated cover arrestor which can only be undone by hand.

A connection for potential equalisation is provided.

**Easy-to-install encasing frame,** standard height 250 mm, with external wall clamps, provided for embedding in concrete (concrete up to upper frame edge) and for fixing to the casing.

Manhole cover and frame shielded arc-welded, acid-treated in a pickling bath and passivated.

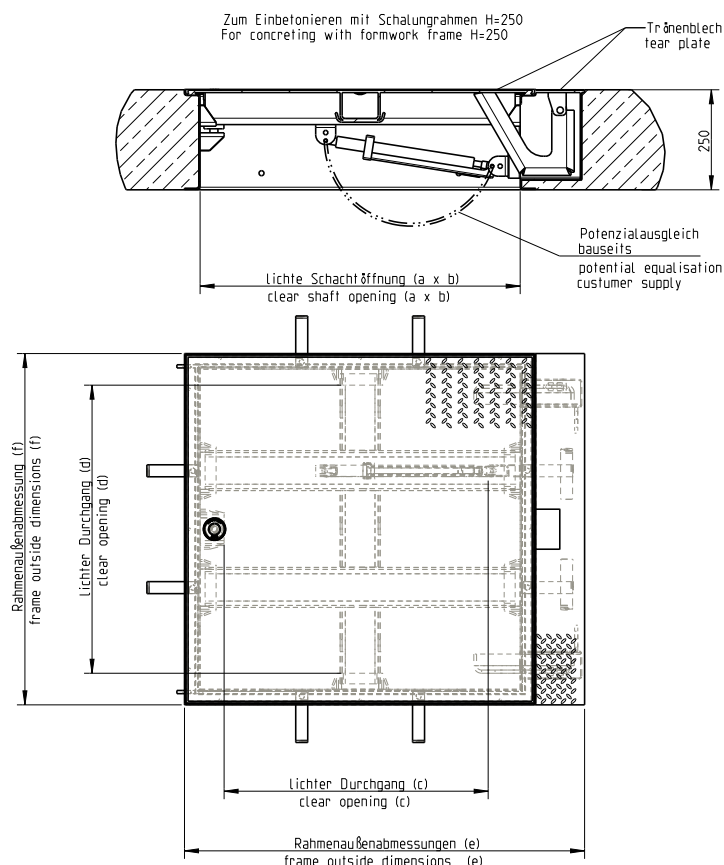
Operating key included.

Options:

- 1.4404 (AISI 316 L) stainless steel
- Lift-off cover (without spring dampers and hinges)
- Non-standard sizes
- Encasing frame, non-standard installation height
- Designed for dowelling (only possible for class A15)
- Possibility to open the cover from below, the traffic situation to be taken into account
- Suitable for big-volume traffic up to a maximum surface of 1 m<sup>2</sup> and maximum side length of 1400 mm (no emergency exit possible). For our definition of "big-volume traffic", please refer to [www.huber.de](http://www.huber.de).
- Magnetic contact
- Cover insulation
- One-part covers watertight up to 5m WC (class D400 and EC100 only)
- One-part covers back-water proof up to 5m WC (class D400 only)
- Cover designed as a shell suitable to be filled with mastic asphalt
- Safety guard / barrier
- Safety guard / antifall guard
- Multi-part cover







Model	Clear manhole opening a x b	Order no.	Inside pass c x d	Frame outside dimensions e x f
Class A: 15 kN / 1.5 t (1)	800 x 800	ED 288/15-G	640 x 800	1000 x 878
Class A: 15 kN / 1.5 t (1)	1000 x 1000	ED 211/15-G	840 x 1000	1200 x 1078
Class B: 125 kN / 12.5 t (2)	800 x 800	ED 288/125-G	640 x 720	1000 x 878
Class B: 125 kN / 12.5 t (2)	1000 x 1000	ED 211/125-G	840 x 920	1200 x 878
Class D: 400 kN / 40 t (3)	800 x 800	ED 288/400-G	640 x 800	1000 x 878
Class D: 400 kN / 40 t (3)	1000 x 1000	ED 211/400-G	840 x 1000	1200 1078
Class D: 400 kN / 40 t (3)	800 x 1200	ED 2812/400-G	660 x 1080	1000 x 1278
Class E: 600 kN / 60 t (4)	800 x 800	ED 288/600-G	640 x 720	1000 x 878
Class E: 600 kN / 60 t (4)	1000 x 1000	ED 211/600-G	840 x 920	1200 x 1078

**Ask for further dimensions.** All measurements in mm.

- (1) For green areas and areas that are no roadways but pedestrian-bearing.
- (2) For walkways and similar areas and for car parks.
- (3) For roadways, parking areas and paved traffic areas, but not suitable for big volume traffic.
- (4) For surfaces that are driven over with high wheel loads, such as docks.

## HUBER SE

Industriepark Erasbach A1 · D-92334 Berching  
Telefon: +49-84 62-201-0 · Fax: +49-84 62-201-810  
info@huber.de · Internet: www.huber.de

Subject to technical modification  
Drawing no. 50947805, 4.2023

Manhole cover SD7, for flush fitting, load bearing,  
attack-proof / security tested, weather-proof,  
rectangular type

## ➤➤ Manhole cover SD7.R, for flush fitting, load bearing, attack-proof / security tested, weather-proof, round type



*The figure shown here may contain special accessories*

**Manhole cover,** installed flush with the surface for pedestrian and/or vehicle traffic, optionally in class A15, B125, D400 or E600, weatherproof, odour-tight against pressureless water, attack-proof, round in shape, made of 1.4307 (AISI 304 L) stainless steel.

Secure to prevent forced access, certified to resistance class RC3 according to DIN EN 1627 in class D400, meeting the requirements of DVGW W 1050 - Object protection for water supply structures. Suitable for use in Ex zone 1.

Not suitable for big-volume traffic.

**Designed for a clear width up to and including 1000 mm and certified to:**

- DIN 1229 / DIN EN 124-1:2015-09 and DIN EN 124-3:2015-09, classes A15, B125, D400, E600 with test certificate and external monitoring.

**Designed for a clear width bigger than 1000 mm and statically calculated according to:**

- DIN EN 1991:2010-12 (Eurocode 1) and DIN EN 1993:2010-12 (Eurocode 3), class EC10 (comparable with class A) and EC100 (comparable with class D)

The cover consists of a stainless steel tear pattern plate, with additional bracing on the bottom according to the weight (load class), slip resistance in accordance with DIN EN 124-1:2015-09, with a low-wear seal on the

cover bottom side, screw lock, including lock system with antidrilling protection, as standard with hardened safety lock as recommended by criminal investigation departments and in accordance with the normative standards; the profile cylinder in accordance with DIN 18252 to be provided by the customer. Frost-proof inner hinges, help for opening in the form of stainless steel gas assisted spring dampers with integrated cover arrestor which can only be undone by hand.

A connection for potential equalisation is provided.

Easy-to-install encasing frame, standard height 250 mm, with external wall clamps, provided for embedding in concrete (concrete up to upper frame edge) and for fixing to the casing.

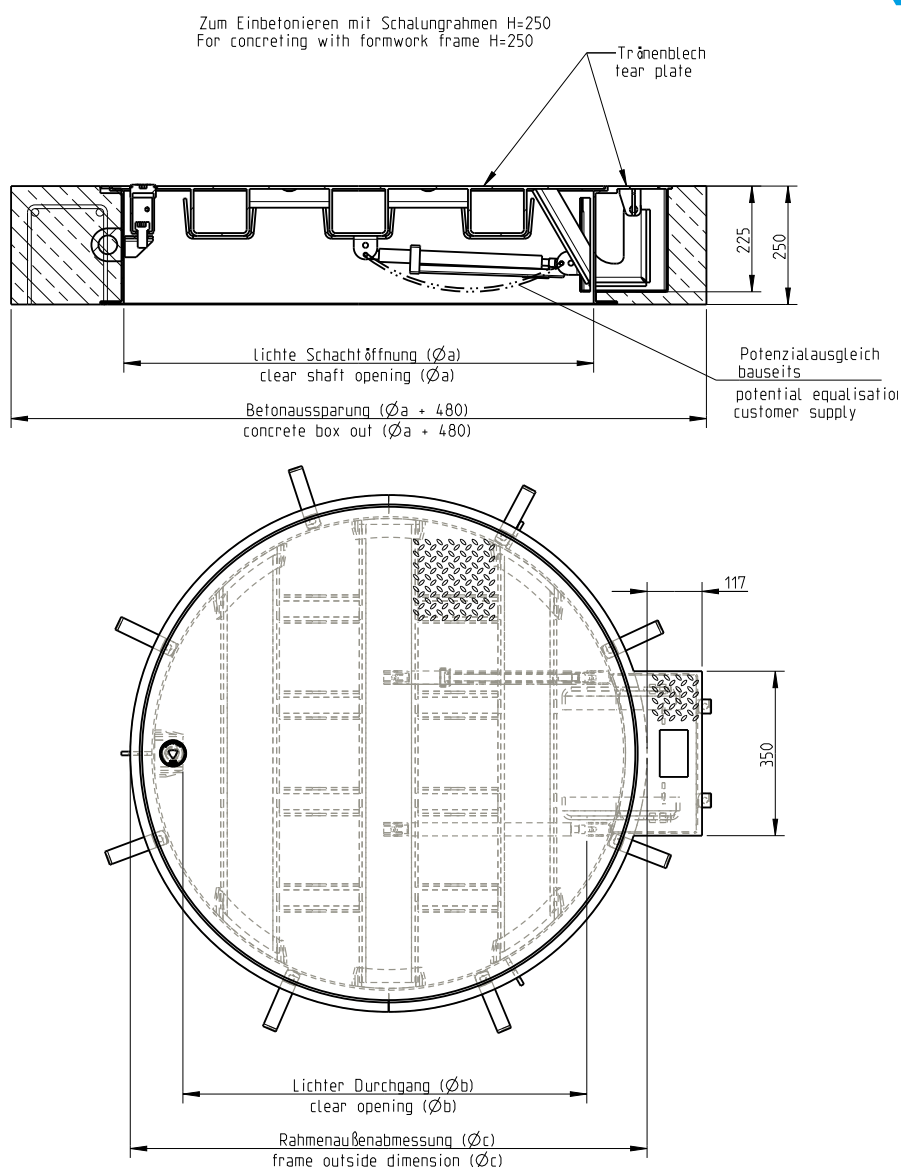
Manhole cover and frame shielded arc-welded, acidtreated in a pickling bath and passivated.

Operating key included.

### Options:

- 1.4404 (AISI 316 L) stainless steel
- Lift-off cover (without spring dampers and hinges)
- Non-standard sizes
- Encasing frame, non-standard installation height
- Designed for dowelling (only possible for class A15)
- Possibility to open the cover from below, the traffic situation to be taken into account
- Suitable for big-volume traffic up to a maximum surface of 1 m<sup>2</sup> (no emergency exit possible). For our definition of "big-volume traffic", please refer to [www.huber.de](http://www.huber.de).
- Magnetic contact
- Cover insulation
- One-part covers watertight up to 5m WC (class D400 only)
- One-part covers back-water proof up to 5m WC (class D400 only)
- Safety guard / antifall guard
- Multi-part cover





Model	Size $\varnothing a$	Order no.	Inside pass $\varnothing b$	Frame outside dimensions (without hinge box) $\varnothing c$
Type A: 15 kN equal 1.5 t (1)	800	ED 208/15-GR	630	900
Type A: 15 kN equal 1.5 t (1)	1000	ED 201/15-GR	830	1100
Type B: 125 kN equal 12.5 t (2)	800	ED 208/125-GR	630	900
Type B: 125 kN equal 12.5 t (2)	1000	ED 201/125-GR	830	1100
Type D: 400 kN equal 40 t (3)	800	ED 208/400-GR	630	900
Type D: 400 kN equal 40 t (3)	1000	ED 201/400-GR	830	1100

**Ask for further dimensions.** All measurements in mm.

- (1) For green areas and areas that are no roadways but pedestrian-bearing.  
 (2) For walkways and similar areas and for car parks.  
 (3) For roadways, parking areas and paved traffic areas, but not suitable for big volume traffic

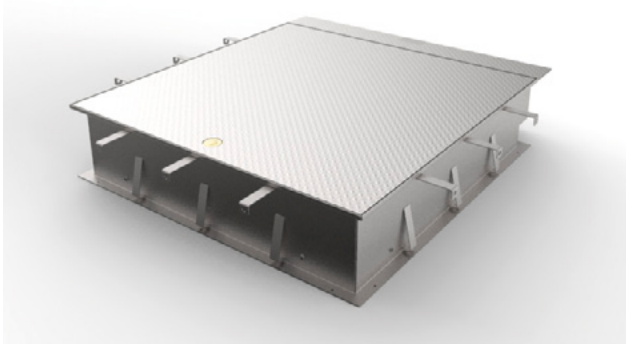
## HUBER SE

Industriepark Erasbach A1 · D-92334 Berching  
 Telefon: +49-84 62-201-0 · Fax: +49-84 62-201-810  
 info@huber.de · Internet: www.huber.de

Subject to technical modification  
 Drawing no. 714013, 2.2023

Manhole cover SD7.R, for flush fitting, load bearing,  
 attack-proof / security tested, weather-proof,  
 round type

## ➤➤ Manhole cover SD7-RC4, for flush fitting, load bearing, attack-proof / security tested, weather-proof, rectangular type



*The figure shown here may contain special accessories*

**Manhole cover,** installed flush with the surface for pedestrian and/or vehicle traffic, optionally in class B125, D400, E600, weatherproof, odour-tight against pressureless water, attack-proof, rectangular in shape, made of 1.4307 (AISI 304 L) stainless steel.

Secure to prevent forced access, certified to resistance class RC4 according to DIN EN 1627 in class B125, D400, E600, meeting the requirements of DVGW W 1050 - Object protection for water supply structures. Suitable for use in Ex zone 1.

Not suitable for big-volume traffic.

**Designed for a clear width up to and including 1000 mm and certified to:**

- DIN 1229 / DIN EN 124-1:2015-09 and DIN EN 124-3:2015-09, classes B125, D400, E600 with test certificate and external monitoring.

**Designed for a clear width bigger than 1000 mm and statically calculated according to:**

- DIN EN 1991:2010-12 (Eurocode 1) and DIN EN 1993:2010-12 (Eurocode 3), class EC100 (comparable with class D).

The cover consists of a stainless steel tear pattern plate, with additional bracing on the bottom according to the weight (load class), slip resistance in accordance with DIN EN 124-1:2015-09, with a low-wear seal on the cover bottom side, screw lock, including lock system with antidrilling protection, as standard with hardened

safety lock as recommended by criminal investigation departments and in accordance with the normative standards; the profile cylinder in accordance with DIN 18252 to be provided by the customer. Frost-proof inner hinges, help for opening in the form of stainless steel gas assisted spring dampers with integrated cover arrestor which can only be undone by hand.

A connection for potential equalisation is provided.

**Easy-to-install encasing frame,** standard height 250 mm, with external wall clamps, provided for embedding in concrete (concrete up to upper frame edge) and for fixing to the casing.

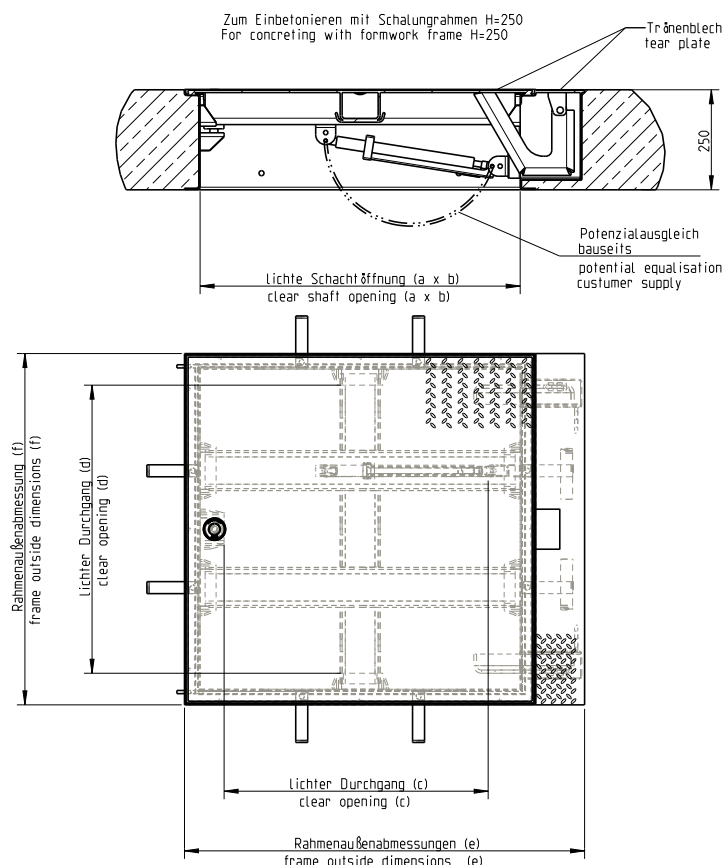
Manhole cover and frame shielded arc-welded, acidtreated in a pickling bath and passivated.

Operating key included.

### Options:

- 1.4404 (AISI 316 L) stainless steel
- Lift-off cover (without spring dampers and hinges)
- Non-standard sizes
- Encasing frame, non-standard installation height
- Possibility to open the cover from below, the traffic situation to be taken into account
- Suitable for big-volume traffic up to a maximum surface of 1 m<sup>2</sup> and maximum side length of 1400 mm (no emergency exit possible). For our definition of "big-volume traffic", please refer to [www.huber.de](http://www.huber.de).
- Magnetic contact
- Cover insulation
- One-part covers watertight up to 5m WC (class D400 and EC100 only)
- One-part covers back-water proof up to 5m WC (class D400 only)
- Cover designed as a shell suitable to be filled with mastic asphalt
- Safety guard / barrier
- Safety guard / anti fall guard
- Multi-part cover





Model	Clear manhole opening a x b	Order no.	Inside pass c x d	Frame outside dimensions e x f
Class B: 125 kN / 12.5 t (1)	800 x 800	ED 288/125-G	640 x 720	1000 x 878
Class B: 125 kN / 12.5 t (1)	1000 x 1000	ED 211/125-G	840 x 920	1200 x 878
Class D: 400 kN / 40 t (2)	800 x 800	ED 288/400-G	640 x 800	1000 x 878
Class D: 400 kN / 40 t (2)	1000 x 1000	ED 211/400-G	840 x 1000	1200 1078
Class E: 600 kN / 60 t (3)	800 x 800	ED 288/600-G	640 x 720	1000 x 878
Class E: 600 kN / 60 t (3)	1000 x 1000	ED 211/600-G	840 x 920	1200 x 1078

**Ask for further dimensions.** All measurements in mm.

- (1) For walkways and similar areas and for car parks.
- (2) For roadways, parking areas and paved traffic areas, but not suitable for big volume traffic.
- (3) For surfaces that are driven over with high wheel loads, such as docks.

## HUBER SE

Industriepark Erasbach A1 · D-92334 Berching  
Telefon: +49-84 62-201-0 · Fax: +49-84 62-201-810  
info@huber.de · Internet: www.huber.de

Subject to technical modification  
Drawing no. 50947805, 4.2023

Manhole cover SD7, for flush fitting, load bearing, attack-proof / security tested RC4, weather-proof, rectangular type

## ➤➤ Manhole cover SD11, for flush fitting, lightweight design



*The figure shown here may contain special accessories*

**Manhole cover,** lift-off design, for flush fitting, weather-proof, rectangular type, load-bearing up to 500 kg/m<sup>2</sup>, made of 1.4307 (AISI 304 L) stainless steel.

**The cover** consists of a stainless steel tear pattern plate, with additional bracing on the bottom according to static requirements, certified slip resistance – grip coefficient USRV 54, with a low-wear seal on the cover bottom side, lockable with hexagon screws.

**Frame** made from U-profile, provided for installation in an existing rabbet.

Manhole cover and frame shielded arc-welded, acid-treated in a pickling bath and passivated.

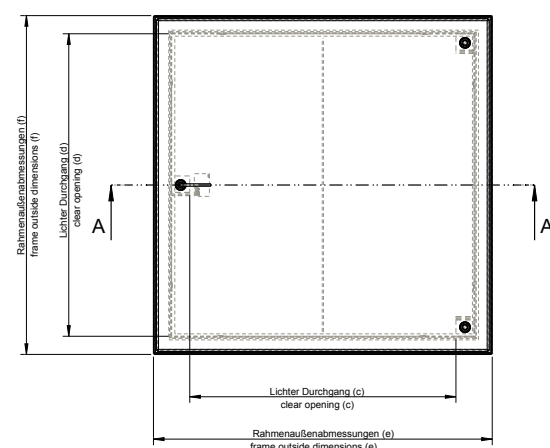
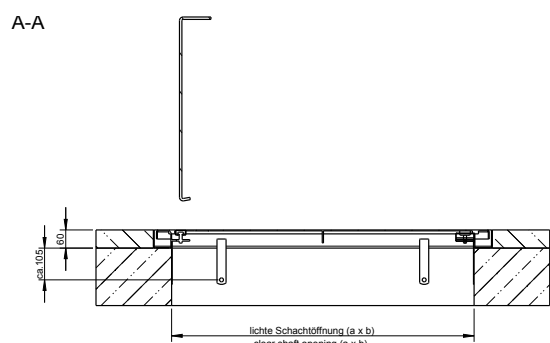
Operating key included.

### **Options:**

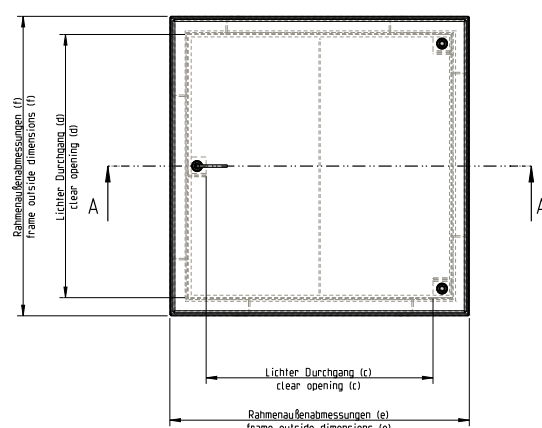
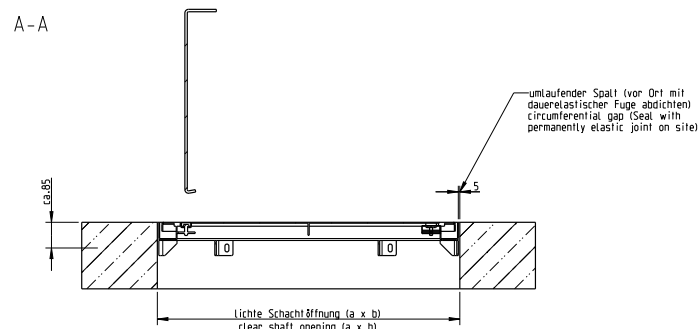
- 1.4404 (AISI 316 L) stainless steel
- With hinges, stainless steel gas-assisted spring dampers and integrated arrestor which can only be undone by hand
- For installation into a manhole neck
- Fixing material and foam rubber gasket
- Magnetic contact (cover open/shut indicator)
- Safety guard / barrier
- Safety guard / antifall guard
- Multi-part cover



## SD11, installed in on-site rabbet



## SD11, installed in manhole neck



Bei Sonderausführungen oder mehrteiliger Ausführung sind Änderungen der Rahmenhöhe möglich.

For special designs or multi-part designs, changes to the frame height are possible.

Model	Clear manhole opening a x b	Order no.	Inside pass c x d	Frame outside dimensions e x f
Standard Model, lift-off design, installation in rabbet	800 x 800	SD11.1 800x800	792 x 680	920 x 920
Standard Model, lift-off design, installation in rabbet	1000 x 1000	SD11.1 1000x1000	992 x 880	1120 x 1120
Standard Model, lift-off design, installation in manhole neck	800 x 800	SD11.1 800x800 AD	670 x 550	790 x 790
Standard Model, lift-off design, installation in manhole neck	1000 x 1000	SD11.1 1000x1000 AD	870 x 750	990 x 990

**Ask for further dimensions.** All measurements in mm.

**HUBER SE**

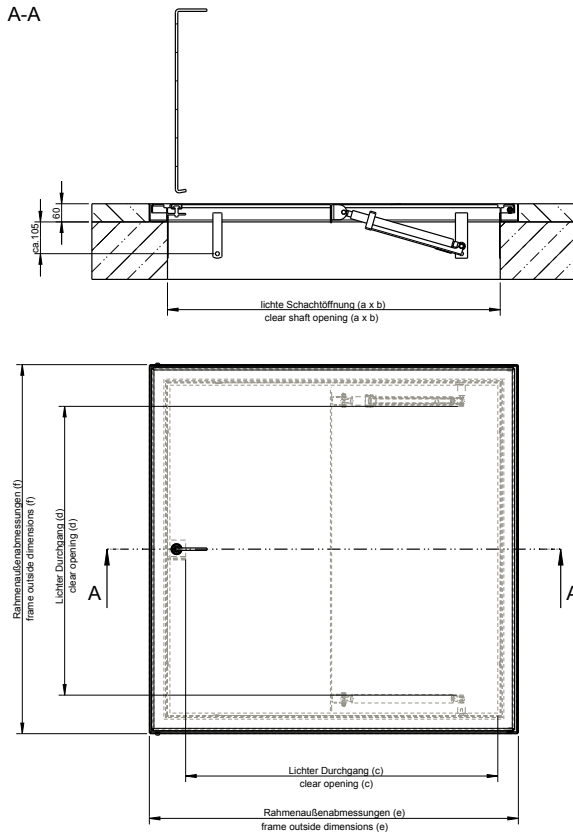
Industriepark Erasbach A1 · D-92334 Berching  
Telefon: +49-84 62-201-0 · Fax: +49-84 62-201-810  
info@huber.de · Internet: www.huber.de

Subject to technical modification  
Drawing no. 714013, 2.2024

Manhole cover SD11, for flush fitting,  
lightweight design

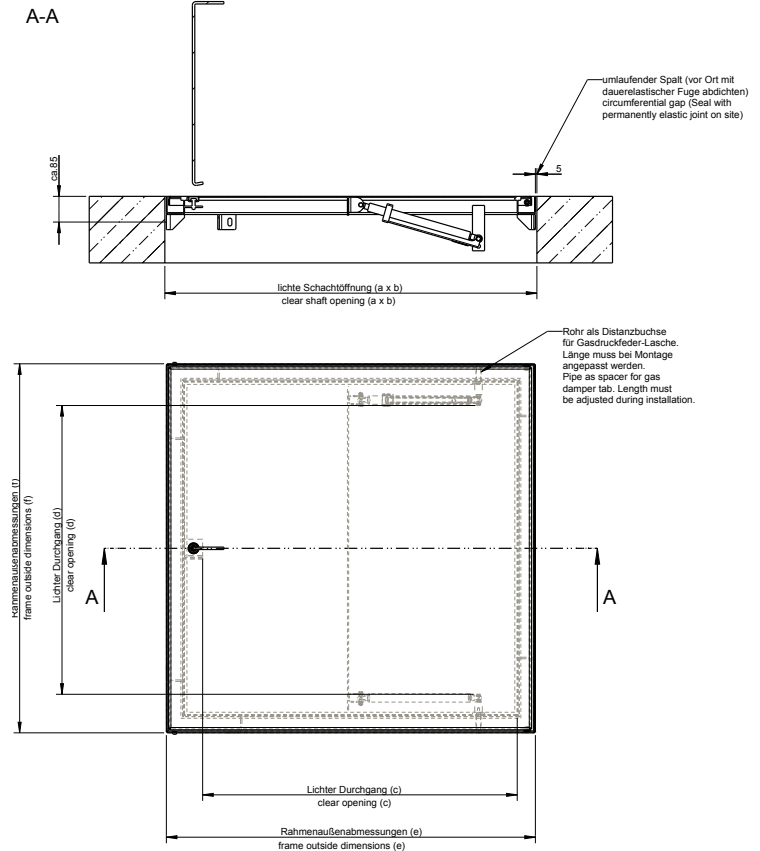
# SD11, installed in on-site rabbet with gas-assisted spring dampers

A-A



# SD11, installed in manhole neck with gas-assisted spring dampers

A-A



Bei Sonderausführungen oder mehrteiliger Ausführung sind Änderungen der Rahmenhöhe möglich.  
For special designs or multi-part designs, changes to the frame height are possible.

Model	Clear manhole opening a x b	Order no.	Inside pass c x d	Frame outside dimensions e x f
Standard Model,with gas assisted spring dampers, installation in rabbet	800 x 800	SD11.1 800x800 GDF	800 x 685	920 x 920
Standard Model,with gas assisted spring dampers, installation in rabbet	1000 x 1000	SD11.1 1000x1000 GDF	845 x 940	1120 x 1120
Standard Model, with gas assisted spring dampers, installation in manhole neck	800 x 800	SD11.1 800x800 AD GDF	670 x 555	790 x 790
Standard Model, with gas assisted spring dampers, installation in manhole neck	1000 x 1000	SD11.1 1000x1000 AD GDF	870 x 755	990 x 990

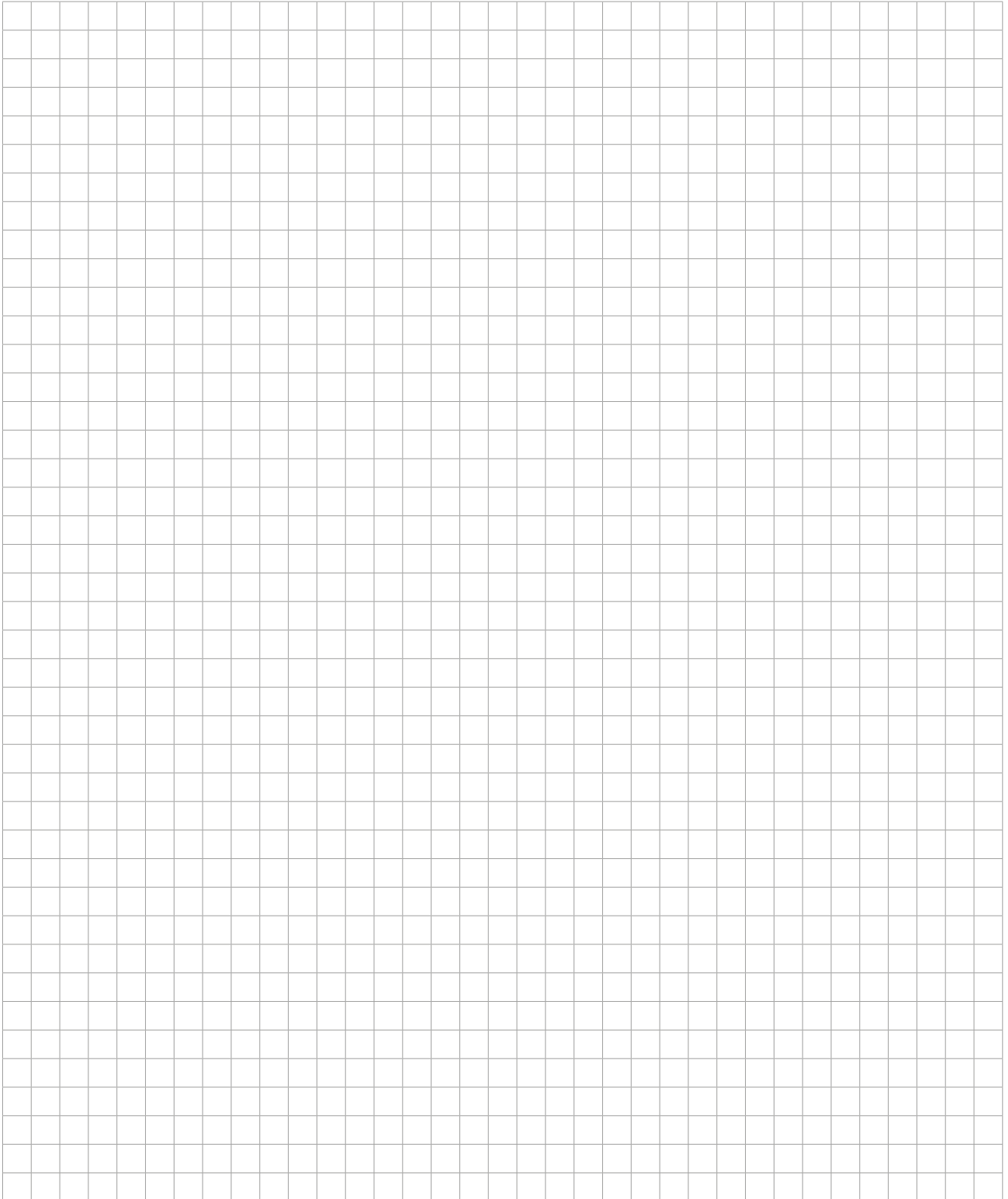
Ask for further dimensions. All measurements in mm.

## HUBER SE

Industriepark Erasbach A1 · D-92334 Berching  
Telefon: +49-84 62-201-0 · Fax: +49-84 62-201-810  
info@huber.de · Internet: www.huber.de

Subject to technical modification  
Drawing no.51292113, 51293653, 2.2024

Manhole cover SD11, for flush fitting,  
lightweight design



## ➤➤ Sliding hatch cover SD12



*The figure shown here may contain special accessories*

**Sliding hatch cover**, completely made of 1.4307 (AISI 304 L) stainless steel, with smooth finish.

**The cover** is made of a stable stainless steel plate and equipped with plastic rollers and maintenance-free journal bearings. The cover is installed in an external guide rail and cannot be removed. Locking when closed is possible by a cylindrical lock.

**The rails** consist of 60/40/2 mm rectangular section fixed with dowels along the rail edge.

Manhole cover and rails shielded arc-welded, acid-treated in a pickling bath and passivated.

Operating key included.

Dimensions according to individual requirements

Available options:

A) straight version

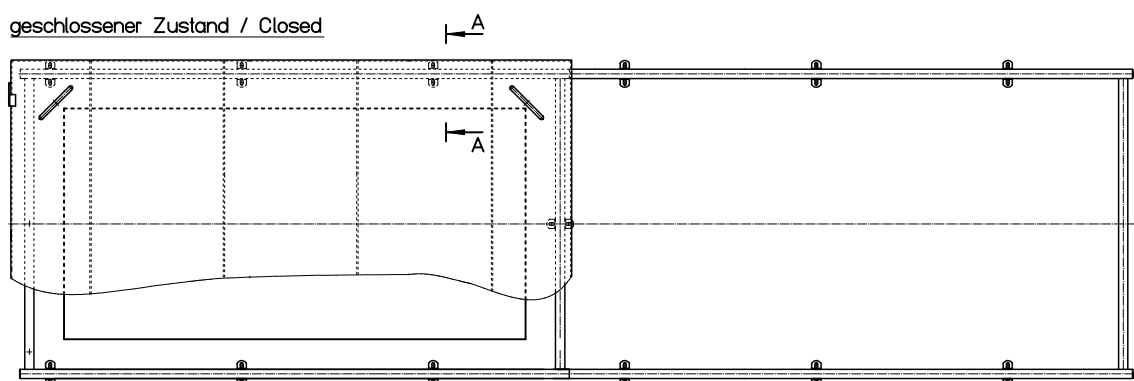
B) circular version

The sliding cover provides access to downward leading stairs.

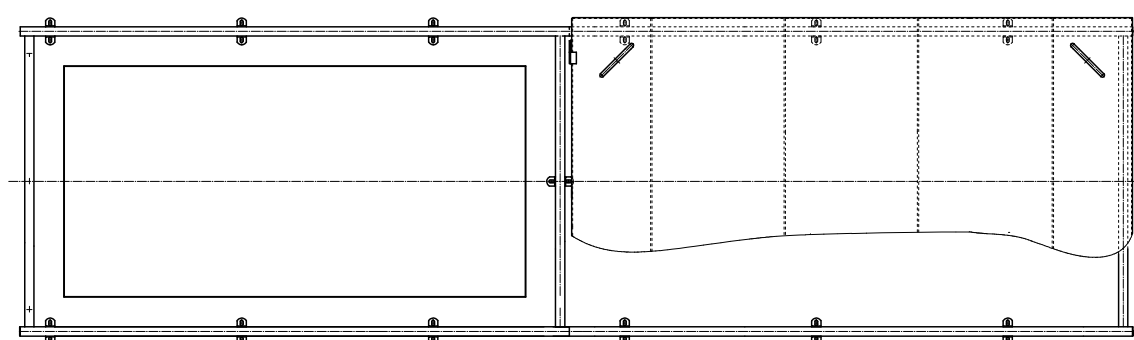
### **Options:**

- 1.4404 (AISI 316 L) stainless steel
- Special design available on request

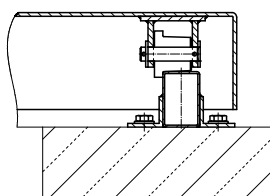
geschlossener Zustand / Closed



geöffneter Zustand / Open



Schnitt: A-A  
section: A-A



**HUBER SE**

Industriepark Erasbach A1 · D-92334 Berching  
Telefon: +49-84 62-201-0 · Fax: +49-84 62-201-810  
info@huber.de · Internet: www.huber.de

Subject to technical modification  
Drawing no. 190.459, 5.2022

Sliding hatch cover SD12

## ➤➤ Guard grate ASG for manhole covers, load bearing up to 150 kg



### Options:

- 1.4404 (AISI 316 L) stainless steel
- Lockable version
- Removable grate for round manholes
- Non-standard sizes

*The figure shown here may contain special accessories*

**Guard grate** in accordance with DGUV regulation 103-007, rectangular, made from 1.4307 (AISI 304 L) stainless steel, universally applicable and retrofittable under manhole covers.

**Grate** made of perforated plate with 5 mm perforations in staggered rows, load bearing capacity 150 kg, hinged and lockable, provided for locking with a customer provided padlock.

**Support**, made of angle profile, for internal bolted fixing under the manhole cover.

Guard grate for mounting under the manhole cover and above the climbing system.

Both grate and support are shielded arc-welded and acid bath cleaned before washing, drying and surface passivation.

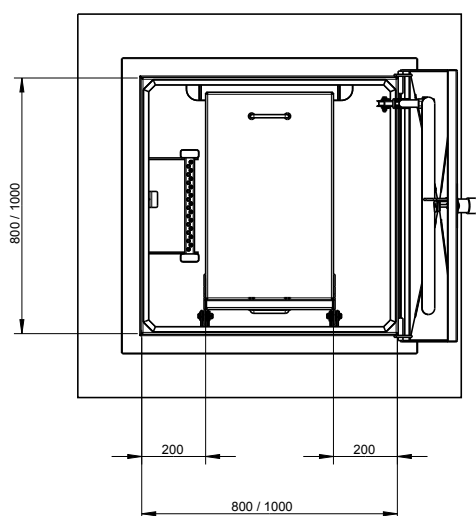
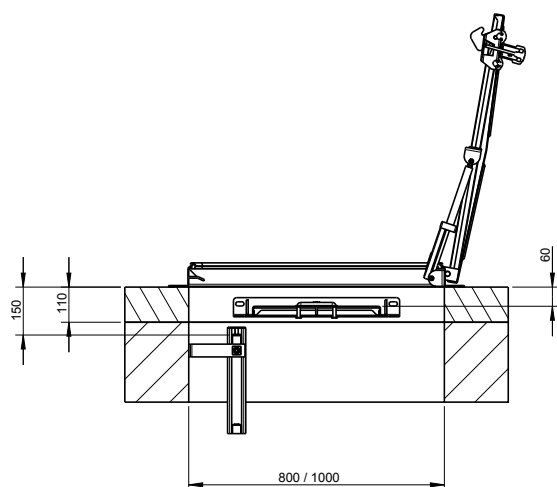
Fixing material included.

Model	Size a x b	Order no.
Standard Model	800 x 800	ASG 800x800 W400
Standard Model	1000 x 1000	ASG 1000x1000 W600

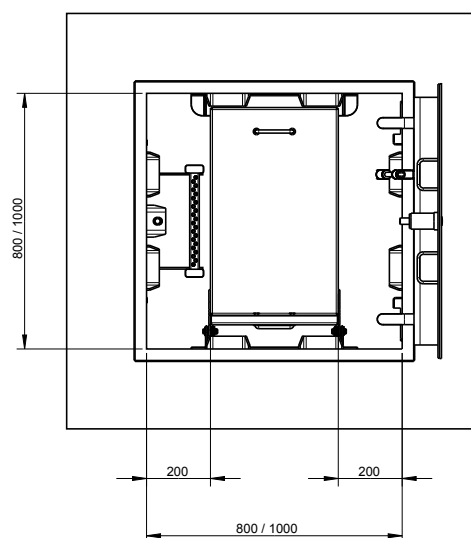
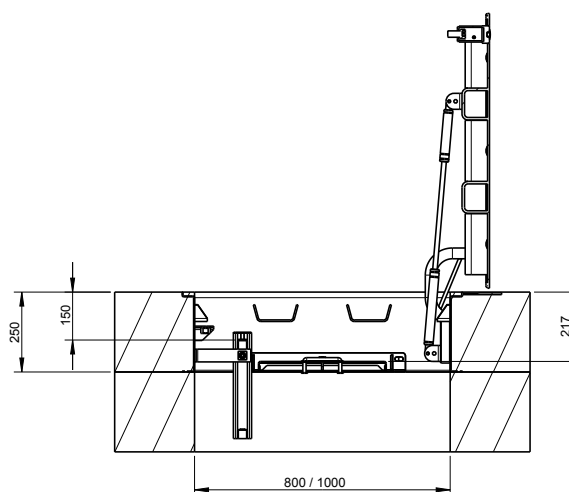
**Ask for further dimensions.** All measurements in mm.



In stock SD1



In stock SD7



## HUBER SE

Industriepark Erasbach A1 · D-92334 Berching  
Telefon: +49-84 62-201-0 · Fax: +49-84 62-201-810  
info@huber.de · Internet: www.huber.de

Subject to technical modification  
Drawing no. 50973614, 2.2023

Guard grate ASG for manhole covers,  
load bearing up to 150 kg

## ➤➤ Guard grate ASG.P, load-bearing up to 200 kg



**Guard grate** in accordance with DGUV regulation 103-007, rectangular, made from 1.4307 (AISI 304 L) stainless steel, universally applicable and retrofittable under manhole covers.

**Guard grate** manufactured from angle profile, loadbearing up to 200 kg, with hinges and gas pressure spring for easy opening and closing.

**Support** made of angle profile, for internal bolted fixing under the manhole cover.

Guard grate for mounting under the manhole cover and above or next to the climbing system.

Both grate and support are shielded arc-welded and acid bath cleaned before washing, drying and surface passivation.

Fixing material included.

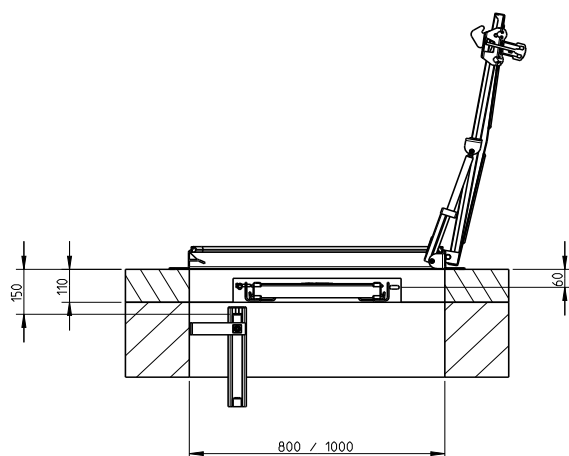
### **Options:**

- 1.4404 (AISI 316 L) stainless steel
- Removable grate for round manholes
- Non-standard sizes

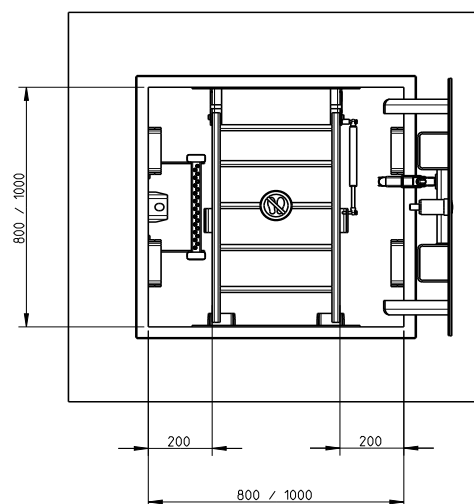
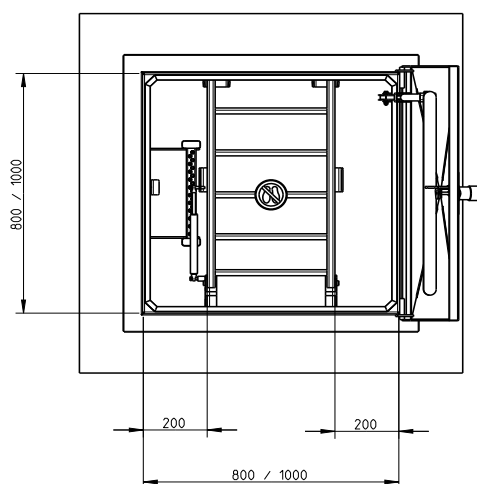
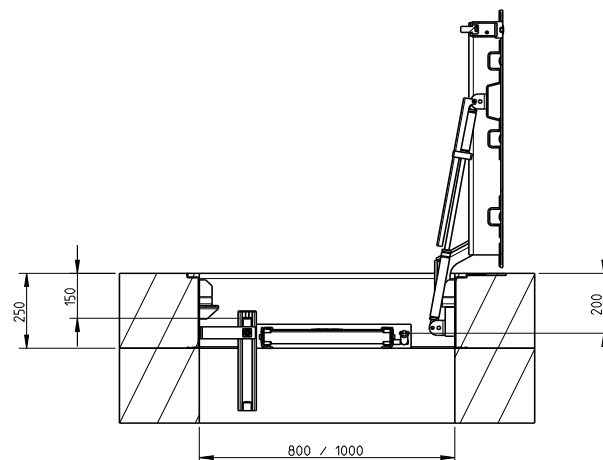


*The figure shown here may contain special accessories*

In stock SD1



In stock SD7



Model	Clear manhole opening a x b	Order no.
Standard Model	800 x 800	ASG.P 800x800 W400
Standard Model	1000 x 1000	ASG.P 1000x1000 W600

**Ask for further dimensions.** All measurements in mm.

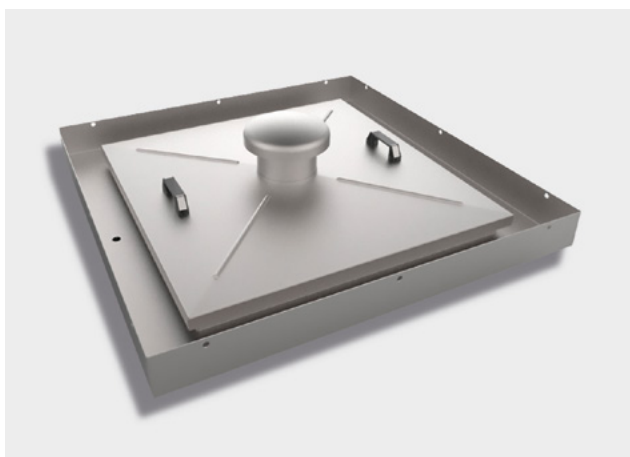
## HUBER SE

Industriepark Erasbach A1 · D-92334 Berching  
Telefon: +49-84 62-201-0 · Fax: +49-84 62-201-810  
info@huber.de · Internet: www.huber.de

Subject to technical modification  
Drawing no. 51620898, 2.2023

Guard grate ASG.P,  
load-bearing up to 200 kg

## ➤➤ Catch basin CT for manhole covers



*The figure shown here may contain special accessories*

**Catch basin**, rectangular in shape, made of 1.4307 (AISI 304 L) stainless steel, universally applicable, for retrofitting under manhole covers as protection against ingress of harmful chemicals, liquid or similar substances into the manhole.

Custom-made to suit the specific local conditions.

**The cover** is made of stainless steel plate, with a centrally raised profile, removable, with two handles.

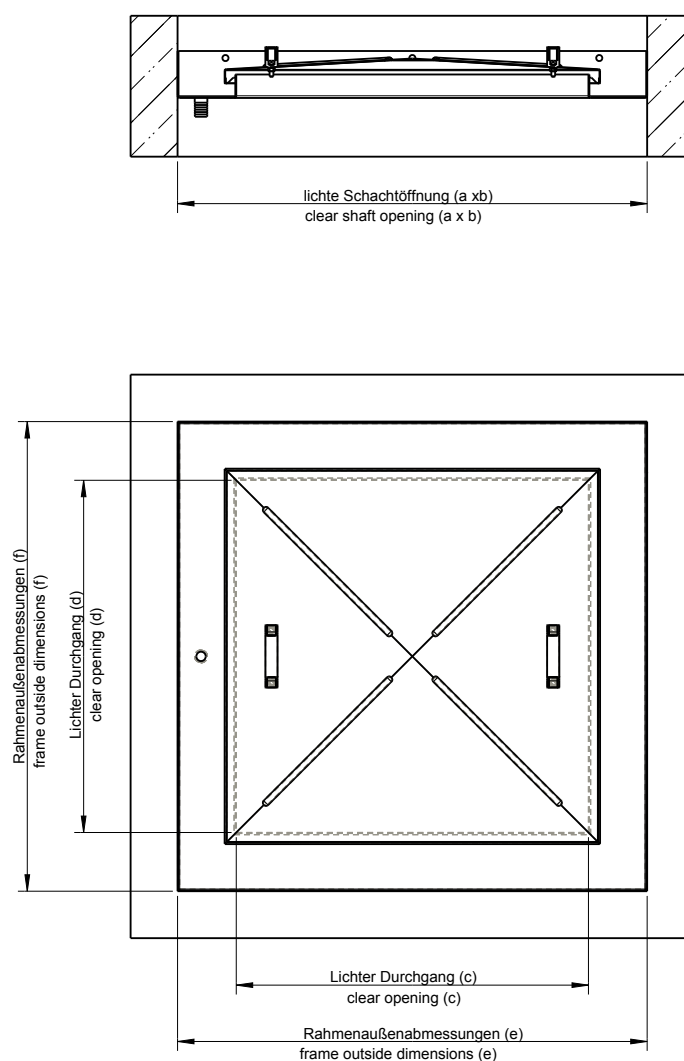
**The frame** consists of an angle section designed as an outlet channel, provided for bolted fixing inside the manhole under the manhole cover, with integrated  $\frac{3}{4}$ " hose nozzle, for on-site connection to an outlet pipe. Fixing material and drinking water approved silicone as sealing between the wall and frame included.

Cover and frame shielded arc-welded and acid bath cleaned before washing, drying and surface passivation.

### **Options:**

- 1.4404 (AISI 316 L) stainless steel
- Air vent DN 150
- Lockable version

A-A



Model	Clear manhole opening a x b	Order no.	Inside pass c x d	Frame outside dimensions e x f
Catch basin CT	800 x 800	CT G 800x800	550 x 550	795 x 795
Catch basin CT	1000 x 1000	CT G 1000x1000	750 x 750	995 x 995

**Ask for further dimensions.** All measurements in mm.

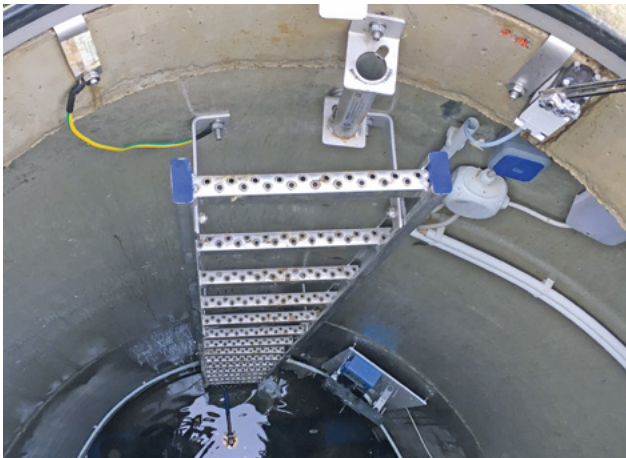
**HUBER SE**

Industriepark Erasbach A1 · D-92334 Berching  
Telefon: +49-84 62-201-0 · Fax: +49-84 62-201-810  
info@huber.de · Internet: www.huber.de

Subject to technical modification  
Drawing no. 51130307, 5.2022

Catch basin CT for manhole covers

## ➤➤ Safety Access Ladder SiS1



*The figure shown here may contain special accessories*

**Safety access ladder**, with design certification and CE marking, in accordance with DIN EN 14396, made of 1.4307 (AISI 304 L) stainless steel.

**Handles** made of special profile of high rigidity (57 x 25 x 2.5 mm), covered with PVC caps.

**Rungs** made of U-profile with perforated surface, 30 mm, slip resistance R 13, step height 280 mm, clear ladder width 300 mm, 400 mm or 500 mm.

Completely shielded arc welded, acid-treated in a pickling bath and passivated.

### **Type A) Vertical installation**

Including long wall fixings, 150 mm brackets adjustable in height for dowelling, providing a minimum tread depth of 150 mm (distance from the wall to the middle of the rung).

Manhole depth T \_\_\_\_\_ m

### **Type B) Angled, wall fixing**

With hooks at the top end to hook into the supplied clamp, with holders at the bottom end to be fixed to the wall, with rubber buffers for wall protection.

Manhole depth T \_\_\_\_\_ m

### **Typ C) Angled, floor fixing**

With hooks at the top end to hook into the supplied clamp, with rubber buffers at the bottom end.

Manhole depth T \_\_\_\_\_ m

Options:

- 1.4404 (AISI 316 L) stainless steel
- Stainless steel fixing material: stud anchors
- Adjustable wall brackets
- Rest platform, foldable, for type A
- Entrance aid in accordance with DIN 19572.
  - Access ladders must have a handhold at their exit. This requirement is deemed to be fulfilled if one or both handles of a ladder project at least 1.1 m beyond the exit height.
  - This projection must be taken into account when selecting the ladder length! The following entrance aid options are available:
    - Fold-back/extensible entrance aid, type EH KV
    - Insertable entrance aid, type EH S
    - Fold-back entrance aid, type EH K
    - Collapsible hand post with double handle, type EH VSD
    - Collapsible hand post (stationary or removable), type EH VS





Length of ladder L (m)	Number of rungs	Width of ladder	(A) Vertical installation	(B) Fixed to the wall	(C) Standing on the floor
0,61	3	300 mm	SA3 610	SB3 610	SC3 610
0,89	4	300 mm	SA3 890	SB3 890	SC3 890
1,17	5	300 mm	SA3 1170	SB3 1170	SC3 1170
1,45	6	300 mm	SA3 1450	SB3 1450	SC3 1450
1,73	7	300 mm	SA3 1730	SB3 1730	SC3 1730
2,01	8	300 mm	SA3 2010	SB3 2010	SC3 2010
2,29	9	300 mm	SA3 2290	SB3 2290	SC3 2290
2,57	10	300 mm	SA3 2570	SB3 2570	SC3 2570
2,85	11	300 mm	SA3 2850	SB3 2850	SC3 2850
3,13	12	300 mm	SA3 3130	SB3 3130	SC3 3130
3,41	13	300 mm	SA3 3410	SB3 3410	SC3 3410
3,69	14	300 mm	SA3 3690	SB3 3690	SC3 3690
3,97	15	300 mm	SA3 3970 *	SB3 3970 *	SC3 3970 *
4,25	16	300 mm	SA3 4250 *	SB3 4250 *	SC3 4250 *
4,53	17	300 mm	SA3 4530 *	SB3 4530 *	SC3 4530 *
4,81	18	300 mm	SA3 4810 *	SB3 4810 *	SC3 4810 *
0,61	3	400 mm	SA4 610	SB4 610	SC4 610
0,89	4	400 mm	SA4 890	SB4 890	SC4 890
1,17	5	400 mm	SA4 1170	SB4 1170	SC4 1170
1,45	6	400 mm	SA4 1450	SB4 1450	SC4 1450
1,73	7	400 mm	SA4 1730	SB4 1730	SC4 1730
2,01	8	400 mm	SA4 2010	SB4 2010	SC4 2010
2,29	9	400 mm	SA4 2290	SB4 2290	SC4 2290
2,57	10	400 mm	SA4 2570	SB4 2570	SC4 2570
2,85	11	400 mm	SA4 2850	SB4 2850	SC4 2850
3,13	12	400 mm	SA4 3130	SB4 3130	SC4 3130
3,41	13	400 mm	SA4 3410	SB4 3410	SC4 3410
3,69	14	400 mm	SA4 3690	SB4 3690	SC4 3690
3,97	15	400 mm	SA4 3970	SB4 3970	SC4 3970
4,25	16	400 mm	SA4 4250	SB4 4250	SC4 4250
4,53	17	400 mm	SA4 4530	SB4 4530	SC4 4530
4,81	18	400 mm	SA4 4810	SB4 4810	SC4 4810
0,61	3	500 mm	SA5 610	SB5 610	SC5 610
0,89	4	500 mm	SA5 890	SB5 890	SC5 890
1,17	5	500 mm	SA5 1170	SB5 1170	SC5 1170
1,45	6	500 mm	SA5 1450	SB5 1450	SC5 1450
1,73	7	500 mm	SA5 1730	SB5 1730	SC5 1730
2,01	8	500 mm	SA5 2010	SB5 2010	SC5 2010
2,29	9	500 mm	SA5 2290	SB5 2290	SC5 2290
2,57	10	500 mm	SA5 2570	SB5 2570	SC5 2570
2,85	11	500 mm	SA5 2850	SB5 2850	SC5 2850
3,13	12	500 mm	SA5 3130	SB5 3130	SC5 3130
3,41	13	500 mm	SA5 3410	SB5 3410	SC5 3410
3,69	14	500 mm	SA5 3690	SB5 3690	SC5 3690
3,97	15	500 mm	SA5 3970	SB5 3970	SC5 3970
4,25	16	500 mm	SA5 4250	SB5 4250	SC5 4250
4,53	17	500 mm	SA5 4530	SB5 4530	SC5 4530
4,81	18	500 mm	SA5 4810	SB5 4810	SC5 4810

Further lengths and versions available on request. \* Delivery in two parts, with connecting material.

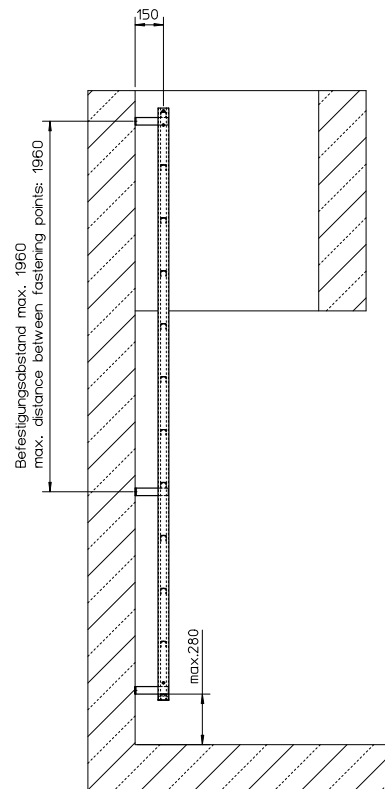
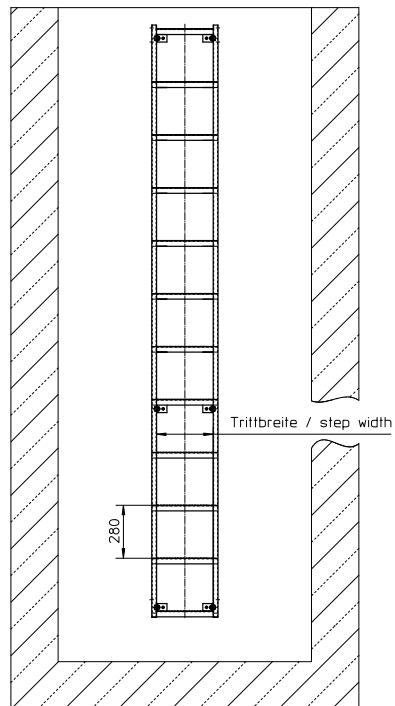
## HUBER SE

Industriepark Erasbach A1 · D-92334 Berching  
Telefon: +49-84 62-201-0 · Fax: +49-84 62-201-810  
info@huber.de · Internet: www.huber.de

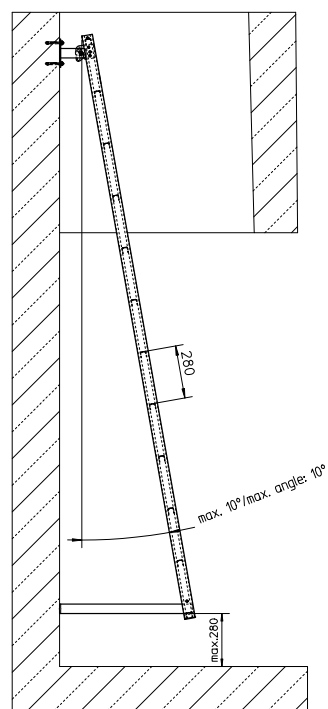
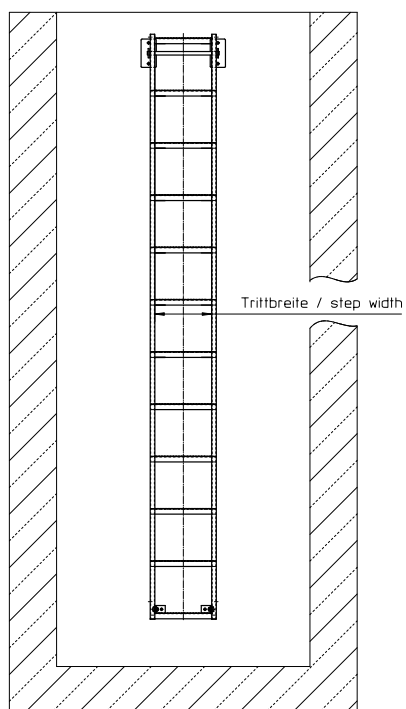
Subject to technical modification  
5.2022

Safety Access Ladder SiS1

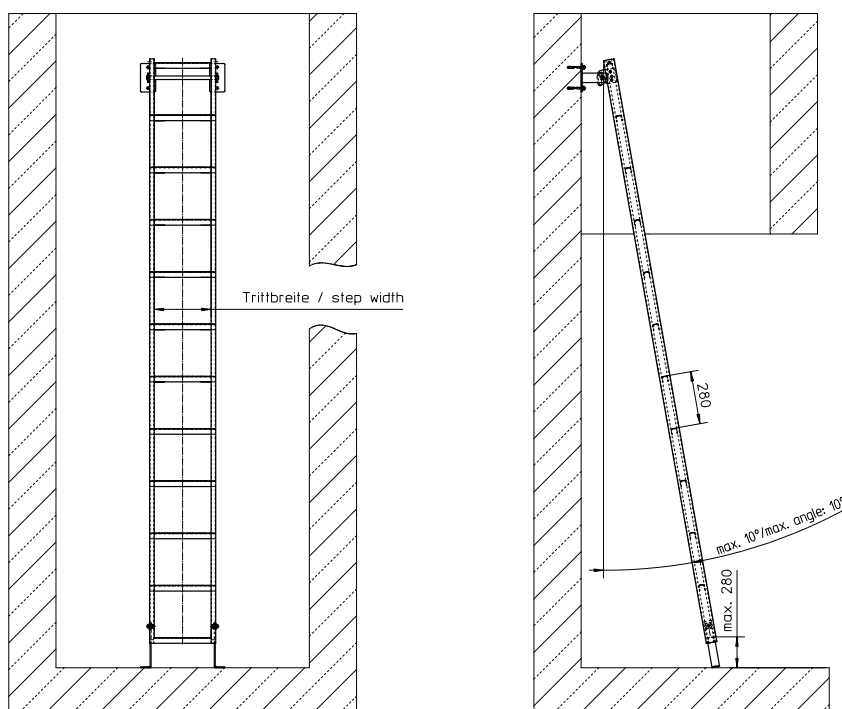
Senkrechter Einbau (Typ A)  
vertical installation (type A)



Gegen die Wand abgestützt (Typ B)  
angled, wall fixing (type B)



Am Boden aufstehend (Typ C)  
angled, floor fixing (type C)



## HUBER SE

Industriepark Erasbach A1 · D-92334 Berching  
Telefon: +49-84 62-201-0 · Fax: +49-84 62-201-810  
info@huber.de · Internet: www.huber.de

Subject to technical modification  
Drawing no. 190.142, 190.143, 190.144, 5.2022

Safety Access Ladder SiS1

## ➤➤ Fold-back entrance aid EH K



*The figure shown here may contain special accessories*

**Fold-back entrance aid**, made of 1.4307 (AISI 304 L) stainless steel, for safety access ladders with 300 mm, 400 mm, 500 mm width.

In accordance with DIN 3620.

**Note:** The 1.1 m projection required according to DIN 19572 is not achieved with this design variant of the entrance aid.

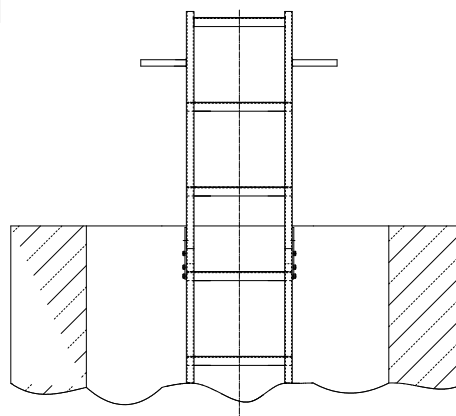
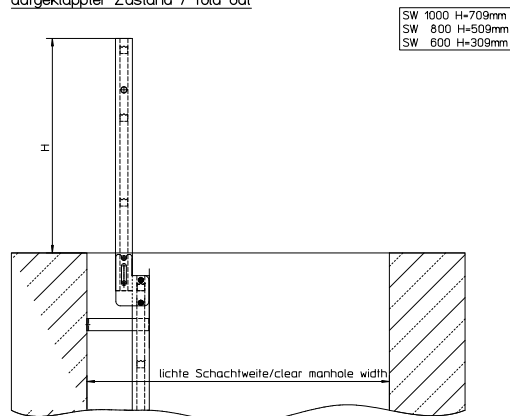
Manhole width = \_\_\_\_\_ mm [with round manhole entrances only possible for 300 mm wide access ladders].

Completely shielded arc welded, acid-treated in a pickling bath and passivated.

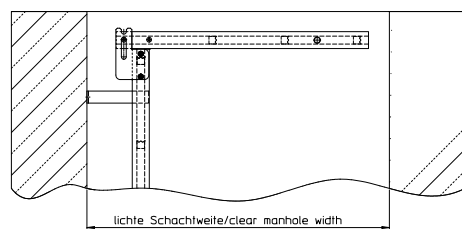
### Options:

- 1.4404 (AISI 316 L) stainless steel

aufgeklappter Zustand / fold out



umgeklappter Zustand / fold back



**HUBER SE**

Industriepark Erasbach A1 · D-92334 Berching  
Telefon: +49-84 62-201-0 · Fax: +49-84 62-201-810  
info@huber.de · Internet: www.huber.de

Subject to technical modification  
Drawing no. 190.148/2, 5.2022

Fold-back entrance aid EH K

## ➤➤ Fold-back, extensible entrance aid EH KV



*The figure shown here may contain special accessories*

**Fold-back, extensible entrance aid**, with design certification in accordance with DIN 19572, made of 1.4307 (AISI 304 L) stainless steel, for safety access ladders with 300 mm, 400 mm, 500 mm width.

Entrance aid in accordance with DIN 19572.

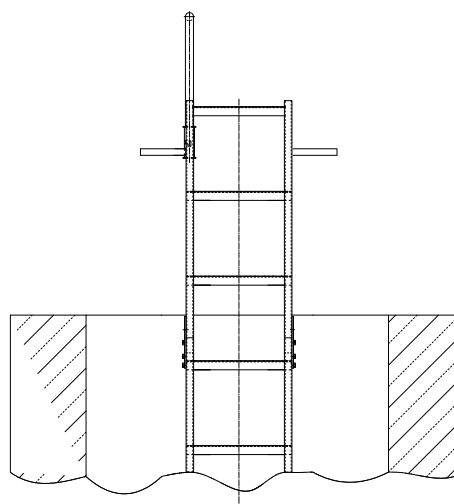
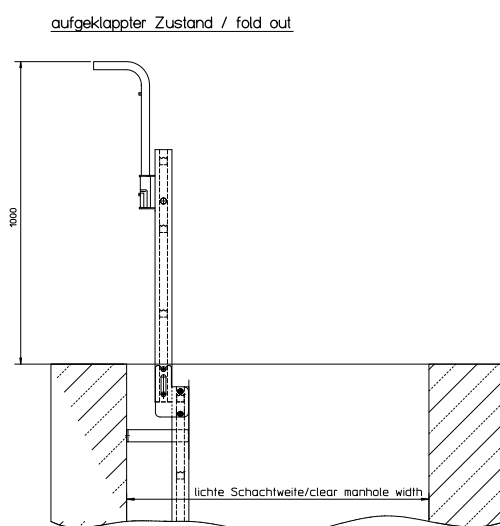
Access ladders must have a handhold at their exit. This requirement is deemed to be fulfilled if one or both handles of a ladder project at least 1.1 m beyond the exit height.

Manhole width = \_\_\_\_\_ mm. [Minimum manhole width required: > 800 mm. With round manhole entrances it is only possible for 300 mm wide access ladders].

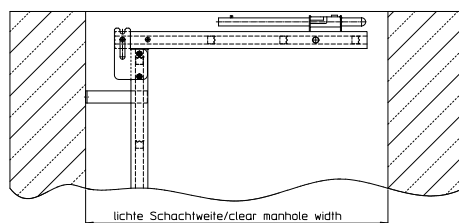
Completely shielded arc welded, acid-treated in a pickling bath and passivated.

### Options:

- 1.4404 (AISI 316 L) stainless steel



umgeklappter Zustand / fold back



## HUBER SE

Industriepark Erasbach A1 · D-92334 Berching  
Telefon: +49-84 62-201-0 · Fax: +49-84 62-201-810  
info@huber.de · Internet: www.huber.de

Subject to technical modification  
Drawing no. 190.148/3, 5.2022

Fold-back, extensible entrance aid EH KV

## ➤➤ Insertable entrance aid EH S



*The figure shown here may contain special accessories*

**Insertable entrance aid**, with design certification in accordance with DIN 19572, made of 1.4307 (AISI 304 L) stainless steel, for safety access ladders with 300 mm, 400 mm, 500 mm width.

Overall length: 1200 mm.

Entrance aid in accordance with DIN 19572.

Access ladders must have a handhold at their exit. This requirement is deemed to be fulfilled if one or both handles of a ladder project at least 1.1m beyond the exit height.

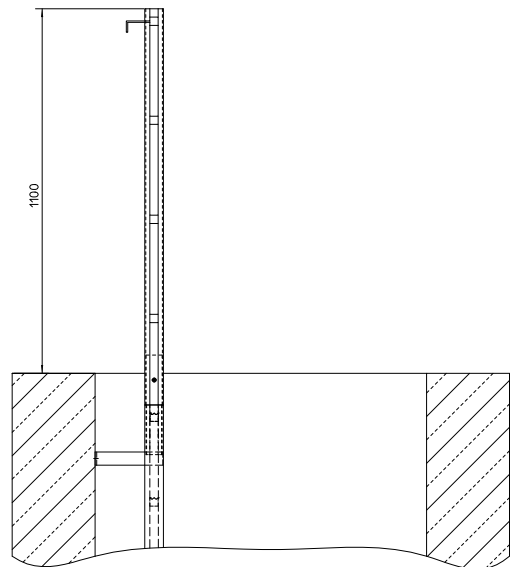
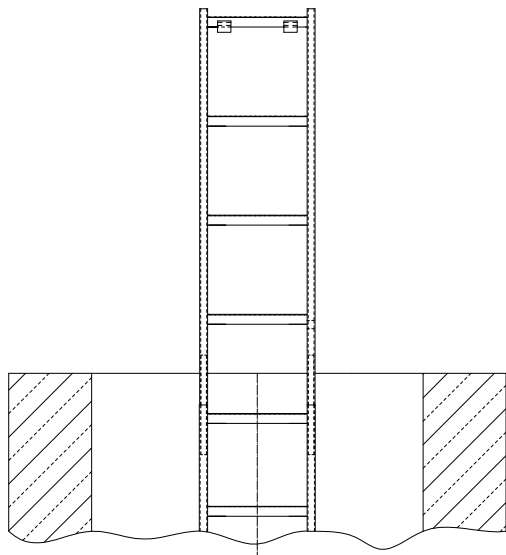
Ladder width = \_\_\_\_\_ mm.

The insertable entrance aid has hooks welded on so that it can be hung onto the top rung and remain inside the manhole.

Completely shielded arc welded, acid-treated in a pickling bath and passivated.

### Options:

- 1.4404 (AISI 316 L) stainless steel



# HUBER SE

Industriepark Erasbach A1 · D-92334 Berching  
Telefon: +49-84 62-201-0 · Fax: +49-84 62-201-810  
info@huber.de · Internet: www.huber.de

Subject to technical modification  
Drawing no. 190.148/4, 5.2022

Insertable entrance aid EH S



## ➤ Collapsible hand post with double handle EH VSD



*The figure shown here may contain special accessories*

**Collapsible hand post** with double handle, with design certification in accordance with DIN 19572, made of 1.4307 (AISI 304 L) stainless steel, for safety access ladders with 300 mm, 400 mm, 500 mm width, for ladder lengths from 2010 mm. Overall length: 1800 mm.

Entrance aid in accordance with DIN 19572.

Access ladders must have a handhold at their exit. This requirement is deemed to be fulfilled if one or both handles of a ladder project at least 1.1 m beyond the exit height.

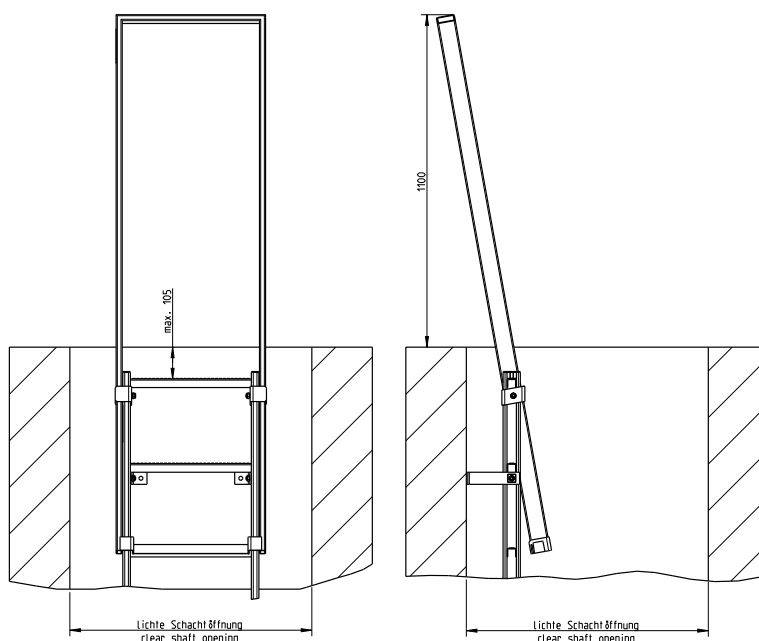
Ladder width = \_\_\_\_\_ mm,

Ladder length = \_\_\_\_\_ m

Completely shielded arc welded, acid-treated in a pickling bath and passivated.

### Options:

- 1.4404 (AISI 316 L) stainless steel



## HUBER SE

Industriepark Erasbach A1 · D-92334 Berching  
Telefon: +49-84 62-201-0 · Fax: +49-84 62-201-810  
info@huber.de · Internet: www.huber.de

Subject to technical modification  
Drawing no. 190.148/5, 5.2022

Collapsible hand post with double handle EH VSD

## ➤➤ Collapsible hand post EH VS



*The figure shown here may contain special accessories*

**Single-beam entrance aid**, with design certification in accordance with DIN 19572, made of 1.4404 (AISI 316 L) stainless steel. Available as either a removable and portable or as stationary collapsible unit. Consisting of a handle and guide.

**Guide** with two holes, diameter: 12 mm, for bolted fixing to the wall of the manhole. With a possibility of adjustment for the handle.

**Handle** of distortion-free pipe, 33.7 x 3.6 mm, total length: 1500 mm.

Completely shielded arc welded, acid-treated in a pickling bath and passivated.

### Options:

- Stainless steel fixing material: stud anchors

### Special design:

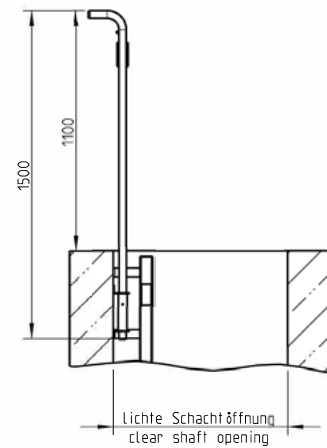
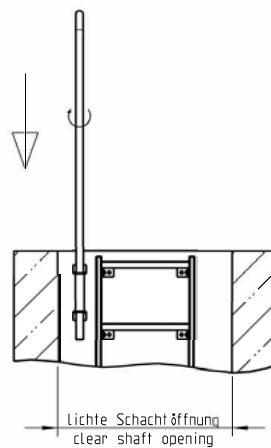
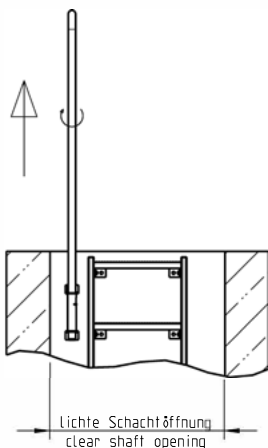
- Suitable for 'econorm' manholes, wall distance to beginning of insertion opening: 158 mm

Montagevariante A  
Herausnehmbar-  
transportabel

installation option A  
removable-  
transportable

Montagevariante B  
Stationär-  
versenkbar

installation option B  
stationary-  
collapsible



-	-
Order-No.	EH handle
Order-No.	EH guide

**HUBER SE**

Industriepark Erasbach A1 · D-92334 Berching  
Telefon: +49-84 62-201-0 · Fax: +49-84 62-201-810  
info@huber.de · Internet: www.huber.de

Subject to technical modification  
Drawing no. 51000468, 5.2022

Collapsible hand post EH VS

## ➤➤ Entrance handle SiS 5 HB

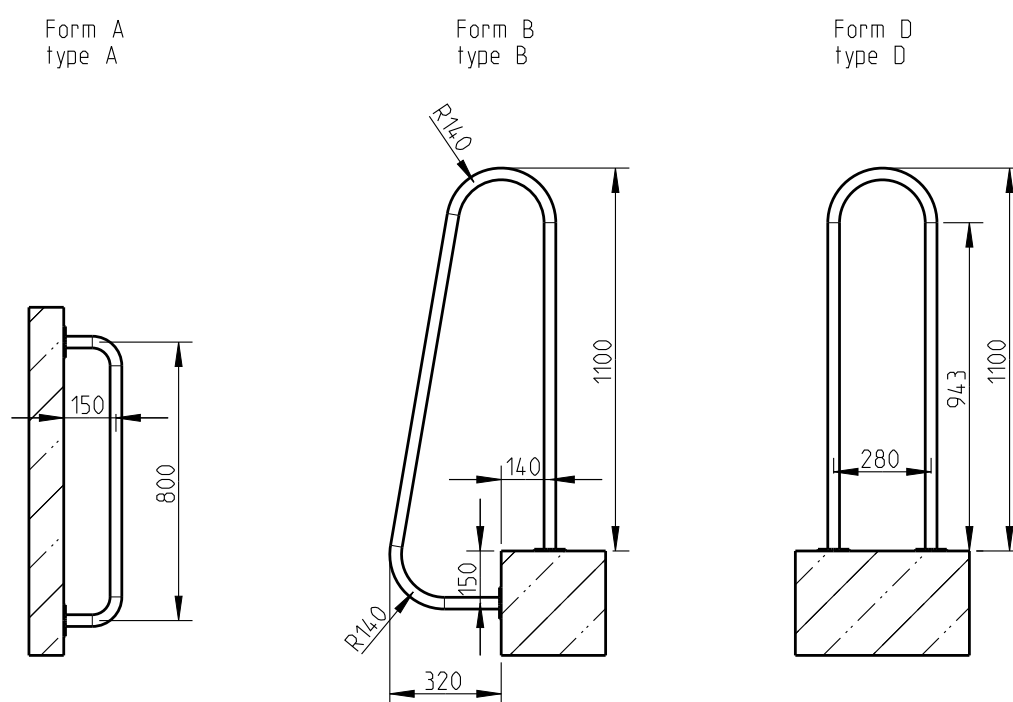
**Entrance handle**, completely made of 1.4307 (AISI 304 L) stainless steel.

Consisting of bent pipe 33.7 x 2.0 mm with fixing plates for wall fixing.

Entrance handle, completely shielded arc welded, acidtreated in a pickling bath and passivated.

### Options:

- 1.4404 (AISI 316 L) stainless steel
- Stainless steel fixing material: stud anchors



-	-
Order-No. A	HEB A
Order-No. B	HEB B
Order-No. D	HEB D

## HUBER SE

Industriepark Erasbach A1 · D-92334 Berching  
Telefon: +49-84 62-201-0 · Fax: +49-84 62-201-810  
info@huber.de · Internet: www.huber.de

Subject to technical modification  
Drawing no. 190.150, 5.2022

Entrance handle SiS 5 HB

## ➤➤ Safety access ladder with safety guard rail SiS2



*The figure shown here may contain special accessories*

**Safety access ladder** with guard rail, with design certification and CE marking; according to UVV regulations ladders with 3 m or 5 m height of fall must be equipped with devices that protect personnel against falls from a height; in accordance with DIN EN 14396, made of 1.4307 (AISI 304 L) stainless steel, designed to attach an insertable entrance aid.

**Handles** made of special profile of high rigidity (57 x 25 x 2.5 mm), covered with PVC caps.

**Rungs** made of U-profile with perforated surface, 30 mm, slip resistance R 13, step height 280 mm, clear ladder width 400 mm or 500 mm, 150 mm long wall fixing brackets for bolting included (distance from the wall to the middle of the rung), with additional safety guard rail fixed to the middle of the ladder. Manhole depth T m

Completely shielded arc welded, acid-treated in a pickling bath and passivated.

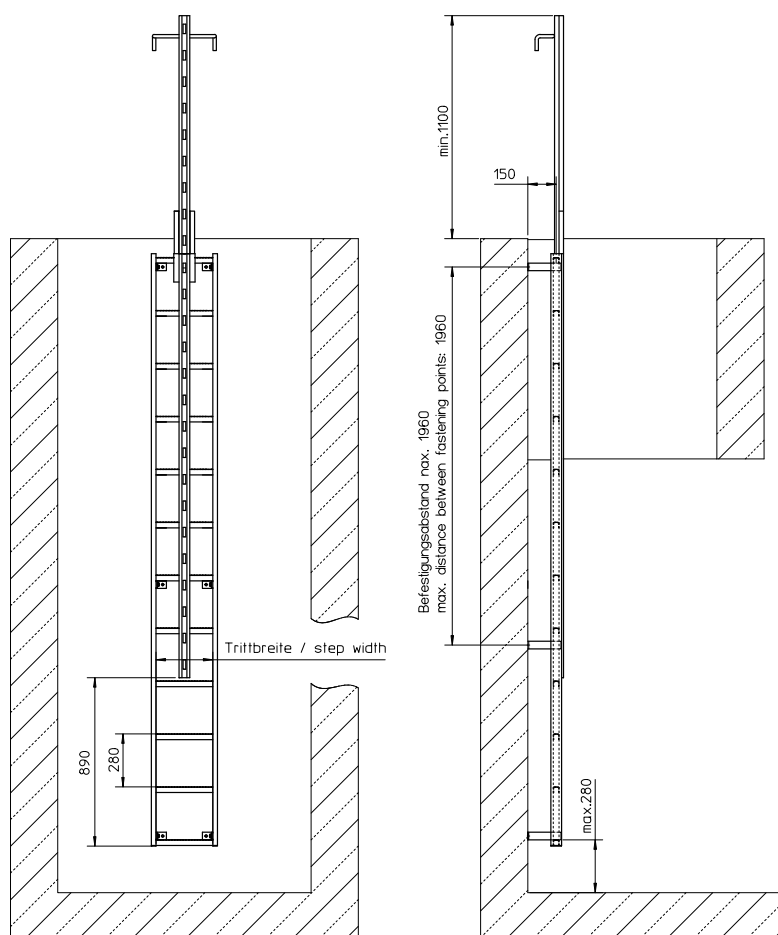
### Options:

- 1.4404 (AISI 316 L) stainless steel
- Fall arrestor type S5c with self-unfolding safety belt type HSE-BFD and spring safety hooks certified by "TÜV SÜD PRODUCT SERVICE GmbH", CE 0123, suitable for safety guard rail
- Safety belt in accordance with EN 361, form A (breastshoulder-crotch belt), suitable for safety guard rail
- Stainless steel fixing material: stud anchors
- Rest platform, foldable
- Entrance aid in accordance with DIN 19572
  - Access ladders must have a handhold at their exit. This requirement is deemed to be fulfilled if one or both handles of a ladder project at least 1.1 m beyond the exit height.
  - This projection must be taken into account when selecting the ladder length!
  - Refer also to our dimension sheet for the entrance aid.

### The following entrance aid with guard rail options are available (see following pages):

- Insertable entrance aid, pivoted, type EH FSS D, L = 1260 mm
- Insertable entrance aid, type EH FSS, L = 1260 mm
- Insertable entrance aid, type EH FSS 'Köln', L = 1680 mm, with additional rung





Length of ladder L (m)	Number of rungs	Order no. width of ladder 400mm	Order no. width of ladder 500mm
2,85	11	SFA4 2850	SFA5 2850
3,13	12	SFA4 3130	SFA5 3130
3,41	13	SFA4 3410	SFA5 3410
3,69	14	SFA4 3690	SFA5 3690
3,97	15	SFA4 3970	SFA5 3970
4,25	16	SFA4 4250	SFA5 4250
4,53	17	SFA4 4530	SFA5 4530
4,81	18	SFA4 4810	SFA5 4810
5,09	19	SFA4 5090	SFA5 5090
5,37	20	SFA4 5370	SFA5 5370
5,65	21	SFA4 5650	SFA5 5650
5,93	22	SFA4 5930	SFA5 5930
6,21	23	SFA4 6210	SFA5 6210

Further lengths and versions available on request.

## HUBER SE

Industriepark Erasbach A1 · D-92334 Berching  
Telefon: +49-84 62-201-0 · Fax: +49-84 62-201-810  
info@huber.de · Internet: www.huber.de

Subject to technical modification  
Drawing no. 90.145, 5.2022

Safety access ladder with safety guard rail SiS2

## ➤➤ Safety climbing device with integrated, safety guard rail SiS3



*The figure shown here may contain special accessories*

**Safety climbing device**, with design certification and CE marking; according to UVV regulations ladders with 3 m or 5 m height of fall must be equipped with devices that protect personnel against falls from a height; in accordance with DIN EN 14396, made of 1.4307 (AISI 304 L) stainless steel.

**The handle** in the middle is made as a safety guard rail, with bottom and top trip gear, which can only be undone by hand, U-profile climbing rungs with perforated surface, 30 mm, slip resistance R 13 and lateral slipping limits, step height 280 mm, with fixing brackets for wall fixing (max. distance 840 mm), with coupling for insertable entrance aid. Manhole depth T m

Completely shielded arc welded, acid-treated in a pickling bath and passivated.

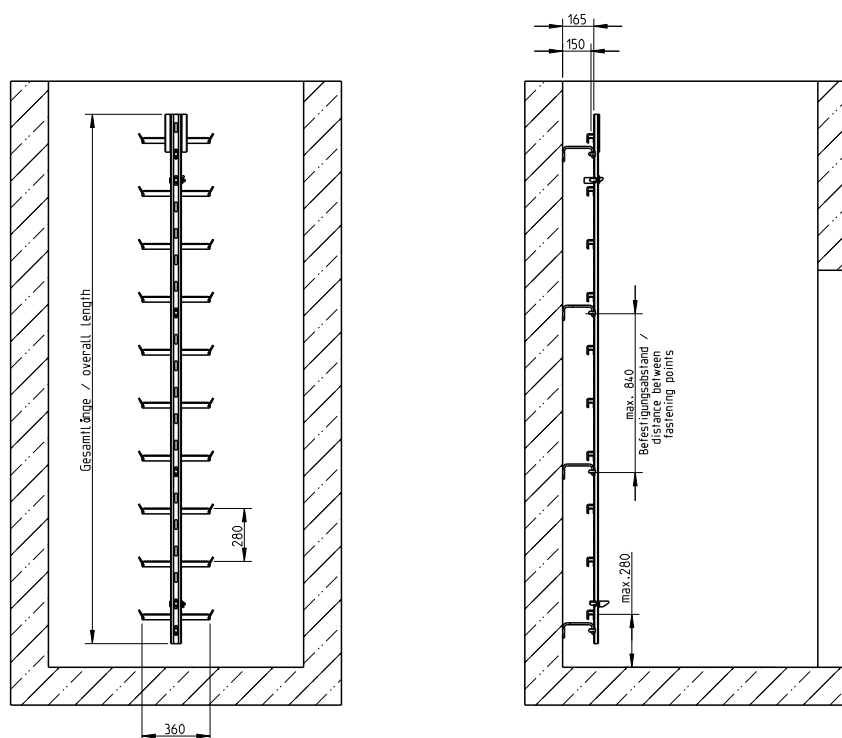
### Options:

- 1.4404 (AISI 316 L) stainless steel
- Fall arrestor type S5c with self-unfolding safety belt type HSE-BFD and spring safety hooks certified by "TÜV SÜD PRODUCT SERVICE GmbH", CE 0123, suitable for safety guard rail
- Safety belt in accordance with EN 361, form A (breastshoulder-crotch belt), suitable for safety guard rail
- Stainless steel fixing material: stud anchors
- Rest platform, foldable
- Entrance aid in accordance with DIN 19572
  - Access ladders must have a handhold at their exit. This requirement is deemed to be fulfilled if one or both handles of a ladder project at least 1.1 m beyond the exit height.
  - This projection must be taken into account when selecting the ladder length!
  - Refer also to our dimension sheet for the entrance aid.

### The following entrance aid with guard rail options are available (see following pages):

- Insertable entrance aid, pivoted, type EH FSS D
- Insertable entrance aid, type EH FSS
- Insertable entrance aid, type EH FSS 'Köln'





Manhole depth T: from (m)	to (m)	Length of climbing device (m)	Number of rungs	Order no.
1,13	1,40	1,12	4	STB 1120
1,41	1,68	1,40	5	STB 1400
1,69	1,96	1,68	6	STB 1680
1,97	2,24	1,96	7	STB 1960
2,25	2,52	2,24	8	STB 2240
2,53	2,80	2,52	9	STB 2520
2,81	3,08	2,80	10	STB 2800
3,09	3,36	3,08	11	STB 3080
3,37	3,64	3,36	12	STB 3360
3,65	3,92	3,64	13	STB 3640
3,93	4,20	3,92	14	STB 3920
4,21	4,48	4,20	15	STB 4200
4,49	4,76	4,48	16	STB 4480
4,77	5,04	4,76	17	STB 4760
5,05	5,32	5,04	18	STB 5040
5,33	5,60	5,32	19	STB 5320
5,61	5,88	5,60	20	STB 5600
5,89	6,16	5,88	21	STB 5880

Further lengths and versions available on request.

## HUBER SE

Industriepark Erasbach A1 · D-92334 Berching  
Telefon: +49-84 62-201-0 · Fax: +49-84 62-201-810  
info@huber.de · Internet: www.huber.de

Subject to technical modification  
Drawing no. 190.146, 5.2022

Safety climbing device  
with integrated safety guard rail SiS3



## ➤➤ Fall arrestor S5c in accordance with DIN EN 353-1

**Fall arrestor** type S5c with self-unfolding safety belt type HSE-BFD and spring safety hooks certified and approved by "TÜV SÜD PRODUCT SERVICE GmbH", CE 0123 in accordance with DIN EN 353-1, suitable for HUBER safety guard rail FSS.

### Options:

- Safety belt in accordance with EN 361, form A (breast-shoulder-crotch belt), suitable for safety guard rail.



*The figure shown here may contain special accessories*



*The figure shown here may contain special accessories*



*The figure shown here may contain special accessories*

## HUBER SE

Industriepark Erasbach A1 · D-92334 Berching  
Telefon: +49-84 62-201-0 · Fax: +49-84 62-201-810  
info@huber.de · Internet: www.huber.de

Subject to technical modification  
5.2022

Fall arrestor S5c in accordance with DIN EN 353-1

## ➤➤ Insertable entrance aid EH FSS, insertable pivoted type EH FSSD



*The figure shown here may contain special accessories*

**Insertable entrance aid**, design certification in accordance with DIN 19572, made of 1.4307 (AISI 304 L) stainless steel, for safety access ladders with 400 mm or 500 mm width with guard rail and safety climbing devices.

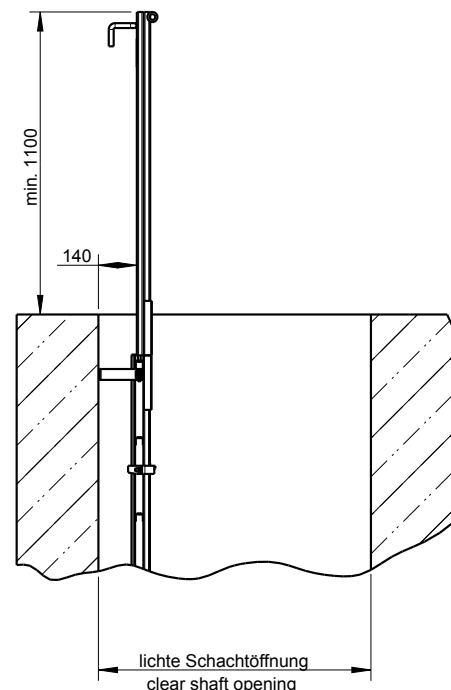
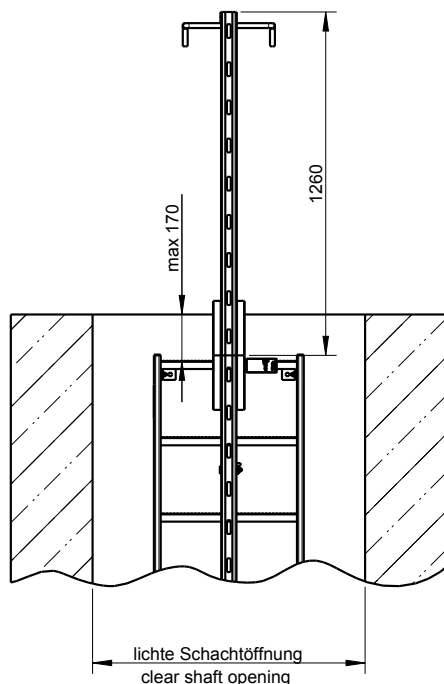
Entrance aid in accordance with DIN 19572.

Access ladders must have a handhold at their exit. This requirement is deemed to be fulfilled if one or both handles of a ladder project at least 1,1 m beyond the exit height.

Completely shielded arc welded, acid-treated in a pickling bath and passivated.

### Options:

- 1.4404 (AISI 3016 L) stainless steel
- Pivoted design, type EH FSS D, for comfortable attachment of the safety belts



## HUBER SE

Industriepark Erasbach A1 · D-92334 Berching  
Telefon: +49-84 62-201-0 · Fax: +49-84 62-201-810  
info@huber.de · Internet: www.huber.de

Subject to technical modification  
Drawing no. 50934024, 5.2022

Insertable entrance aid EH FSS,  
insertable pivoted type EH FSSD

## ➤➤ Venting chimney BKA 1



*The figure shown here may contain special accessories*

**Venting chimney** DN 150 (154 mm outside dia.), with insect-proof stainless steel screen, mesh 1x1 mm, free sectional area 37%, with attached hood, completely made of 1.4307 (AISI 304 L) stainless steel.

Completely shielded arc welded, acid-treated in a pickling bath and passivated.

### I. Vertical installation

Length L = \_\_\_\_\_ mm

### II. Wall installation

Flange for bolted fixing to the outer tank wall, drain trap DN 20 for condensate with stainless steel screen, lateral wall distance to pipe axis: 227 mm. Vertical pipe length

L = \_\_\_\_\_ mm

### Options I for vertical installation:

- Adjustable wall flange
- Welded-on wall flange
- Welded-on dowel flange
- Rubber seal and fixing material for the dowel flange
- Pipe saddle DN 150, wall distance to pipe axis: 227 mm ± 30 mm
- PVC connection possible (only for manhole interior)

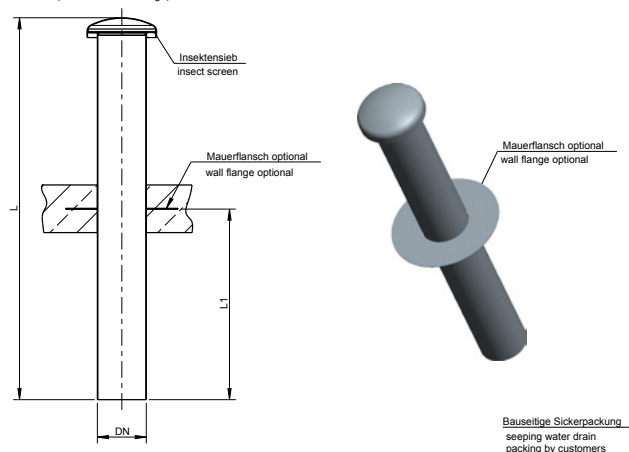
### Options II for lateral installation:

- Guard grille for dowelling to the inner tank wall, mesh 10 x 10 mm, free cross section, 55%
- Rubber seal and fixing material for the dowel flange
- Pipe saddle DN 150, wall distance to pipe axis: 227 mm ± 30 mm

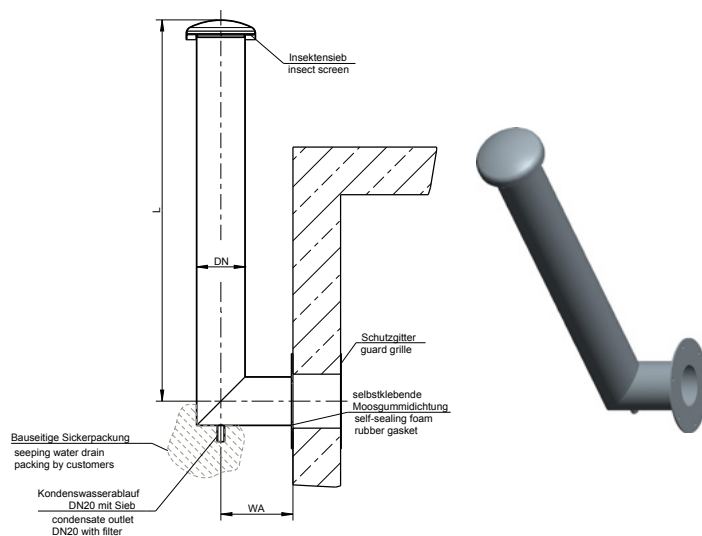
### Options for both installation variants:

- Replaceable pollen filter
- Tubular biofilter within the ventilating chimney for odour elimination
- 1.4404 (AISI 316 L) stainless steel
- Other pipe diameters

I. Senkrechter Einbau  
(Darstellung mit Mauerflansch)  
I. vertical installation  
(version with wall flange)



II. Seitlicher Einbau  
II. wall installation



Order no.	Length, only for vertical type (I.)
BKA 1000	1000
BKA 1500	1500
BKA 2000	2000
BKA 2500	2500
BKA 3000	3000
BKA 3500	3500

**HUBER SE**

Industriepark Erasbach A1 · D-92334 Berching  
Telefon: +49-84 62-201-0 · Fax: +49-84 62-201-810  
info@huber.de · Internet: www.huber.de

Subject to technical modification  
Drawing no. 50945691, 9.2023

Venting chimney BKA 1

## ➤➤ Prefabricated manhole FGS 1



*The figure shown here may contain special accessories*

**Prefabricated manhole**, completely made of 1.4307 (AISI 304 L) stainless steel, watertight, with entrance and installation opening in accordance with DVGW Standard W 122. Robust casing, diameter: 1900/2500 mm, head room: 2000 mm, height of domes: 800 mm, total height: 3290/3400 mm, bottom made of tear pattern plate (slip resistance R 11 in accordance with DIN 51130) with inclination to the pump sump, for bolted fixing on a customer-provided concrete foundation, with the following stainless steel components:

- Manhole cover, round type, designed as an entrance opening, 800 mm diameter, with rubber seal, with air vent DN 150 (order no. 108/GDR)
- Manhole cover, round type, designed as an installation opening, 800 mm diameter, with rubber seal (order no. 108/GDR), or according to the well head size
- Safety access ladder, width 300 mm, vertical installation, length 2850/3130 mm
- Fold-back/extensible entrance aid
- Ventilating chimney DN 150, 200 mm, ending above manhole bottom
- FF-piece, DN \_\_\_\_\_, as a pipe duct, length 200 mm, welded in the casing, floor distance: 800 mm
- Cable duct, diameter: \_\_\_\_\_ mm, floor distance: 1000 mm

- Holders for control panel
- Pump sump, 300 mm diameter, welded to the bottom, covered by a perforated stainless steel plate, with handle
- Lifting eyes
- Fixing material

Completely shielded arc welded, acid-treated in a pickling bath and passivated, including all built-in components.

### Options:

- Well head, DN \_\_\_\_\_, in accordance with technical data sheet BKF 1, welded to the manhole bottom
- Provided for optional ventilator
- 1.4404 (AISI 316 L) stainless steel

### Fields of application:

Prefabricated stainless steel manholes are watertight and frost-proof. They are applied in flood areas and areas with a high groundwater level. They are quickly installed, permanently corrosion resistant and maintenance-free.

### Note:

A concrete foundation is required for watertight prefabricated manholes installed below ground water level.







HUBER SE · Industriepark Erasbach A1 · D-92334 Berching · Germany

☎ +49-8462-201-0 · 📠 +49-8462-201-810 · ✉ info@huber.de · 🌐 www.huber.de

Manhole Covers · Subject to technical modification

0,0 / 8 – 2.2024 – 10.2018