

►► Double Security Door TT2.2/RC3

Access door for buildings in the field of potable water supply equipped with a burglar alarm system.



The figure shown here may contain special accessories

Security class RC3 is recommended by the criminal investigation department if the building is additionally secured by means of a burglar alarm system.

Security door, burglar and attack proof, certified to security of DIN EN 1627, resistance class RC3, ready for installation, double-leaf, double skinned, completely made from 1.4307 (AISI 304 L) stainless steel, with double rubber seal, the door leaves and frame closing flush, the fixable and swing leaf opening to the outside (in escape direction). Sound insulation: 34/29 dB.

Door leaves with injected CFCs-free polyurethane hard foam insulation, longitudinally ground surface finish, with rubber seal. Fastened to the frame with stable maintenance-free hinge plates. The closed door leaves engage flush with the frame by means of solid anchor bolts engaging in the frame for four-point locking. Galvanized safety lock with stainless steel forend, with austenitic manganese steel plate as anti-drilling protection, provided for a customer-provided mechanical profile half cylinder in accordance with DIN 18252:2006-12,21-,31-,71-BZ), with anti-panic lock, i.e. the door can any time be opened from inside by operating the handle, even when locked. Protective stainless steel fitting, without cylinder cover, with a rigidly mounted turning handle and a red plastic handle inside.

The **fixable leaf** is operated by means of a sliding locking bolt. The contact surface between the opening leaf and fixable leaf is rubber sealed.

Frame, three-sided, fabricated from special section, with inserted rubber seal, with step flashing, including fixing material.

Frame and door shielded arc-welded and acid bath cleaned before washing, drying and surface passivation.

Ordering options:

Frame / mounting:

- Z-frame – bolted with dowelling clips
- Block frame – bolted with dowelling clips
- Block frame – bolted through the frame

Door opening options:

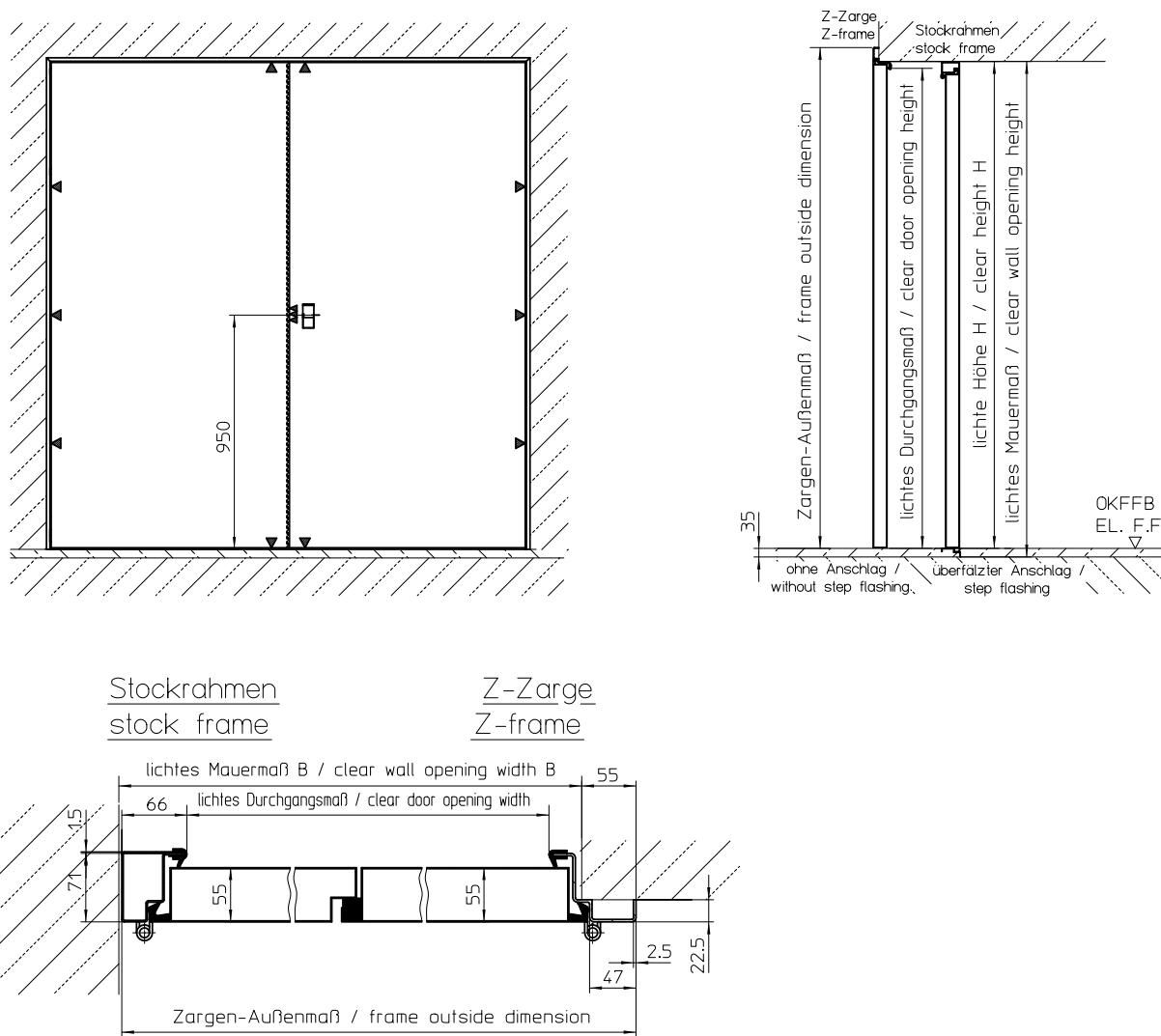
- Hinges on left
- Hinges on right

Options:

- 1.4404 (AISI 316 L) stainless steel
- One/two security ventilation louvre(s) size 500 x 300 mm
- Provided for a customer-supplied digital profile cylinder with anti-panic function and pulling protection
- Upper door closer, lockable in position
- One-part or two-part door arrestor
- Lowerable floor seal
- Lockable from inside with a second handle
- Surface finish (lacquer with or without anti-graffiti properties, copper covering, wooden panelling)
- Alarm system in door surface
- Magnetic contact: “door open” or “door closed” status display
- Lock-bolt contact: “locked” or “unlocked” status display
- Door heating (heating cable in frame and/or door surface), without temperature sensor, without controls
- Lock for two side-by-side profile cylinders (that can be opened independently)
- Stainless steel rain protection rosette for the stainless steel profile cylinder
- Block frame insulation
- Potential equalisation on frame
- Steel sheet finish for exterior door surface for installations exposed to sunlight

Note:

If the door is exposed to sunlight, its operability may be affected. In such a case, it is recommended to equip the door outside with a wood panelling or steel sheet.



We manufacture to your specifications. Please consider these definitions of measures:

Clear wall opening (F) = distance between bottom edge of lintel and top edge of unfinished floor

Clear height (H) = distance between bottom edge of lintel and top edge of finished floor

HUBER SE

Industriepark Erasbach A1 · D-92334 Berching
Telefon: +49-84 62-201-0 · Fax: +49-84 62-201-810
info@huber.de · Internet: www.huber.de

Subject to technical modification
Drawing No. 190.162, 7.2023

Double Security Door TT2.2/RC3